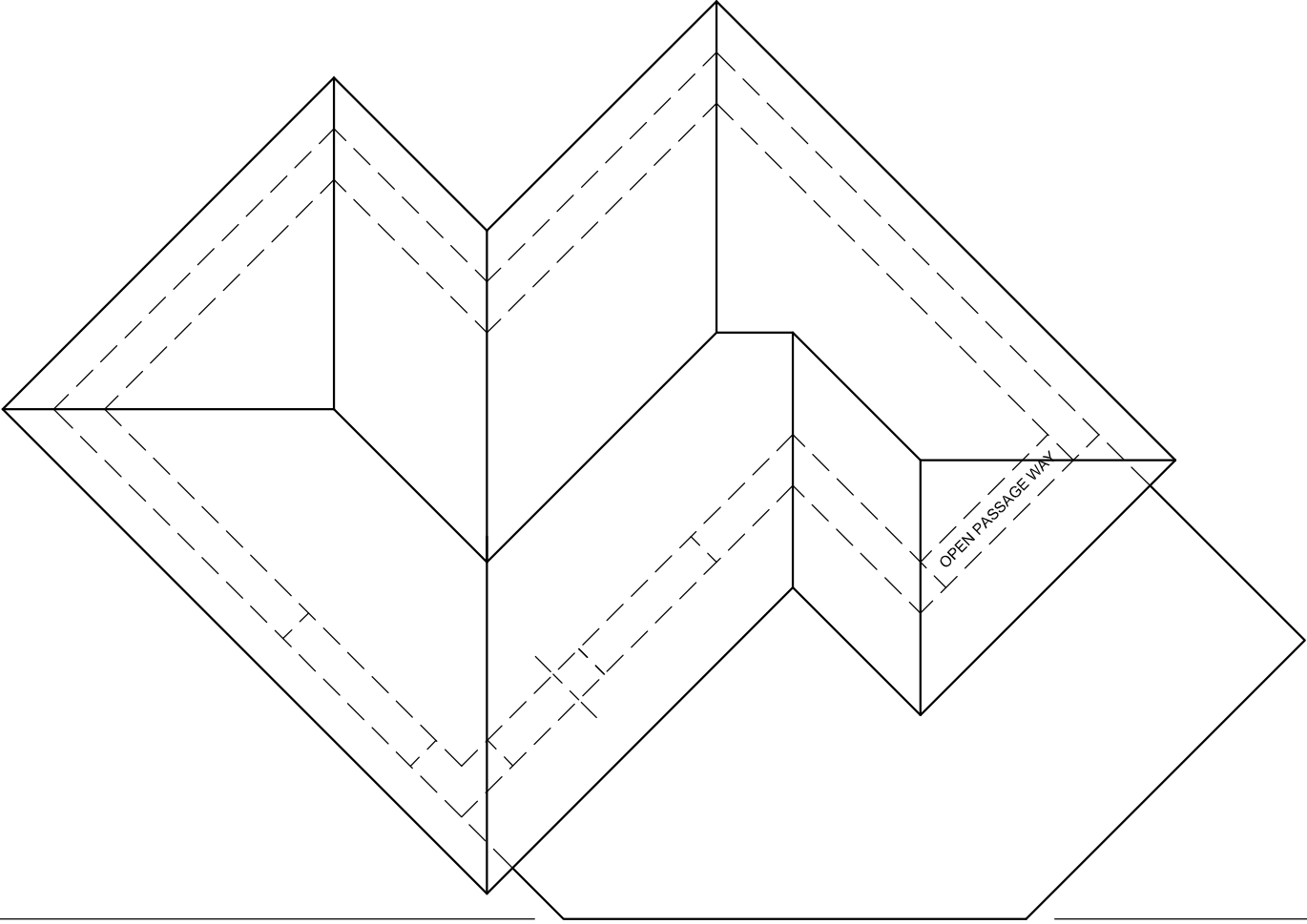


# SA-STUDENT

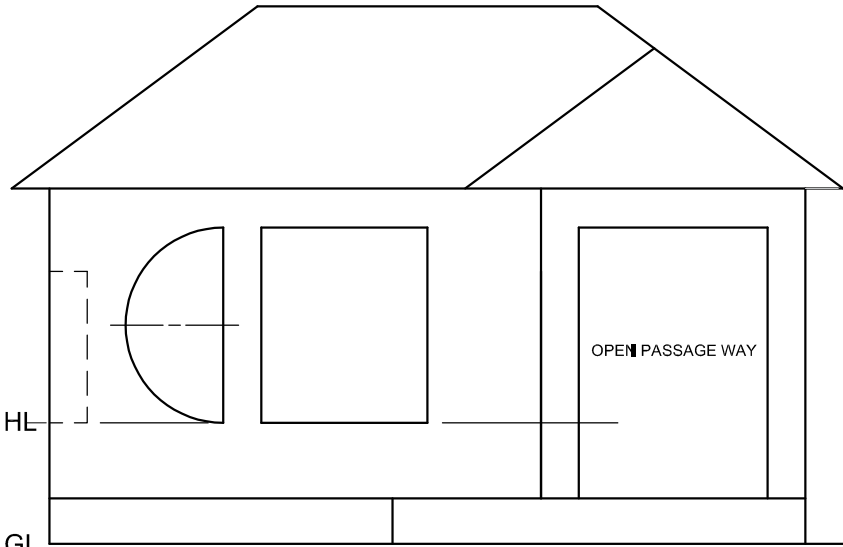
To pass high school please visit us at:  
<https://sa-student.com/>

aahh... EGD Don't You Just Love It ;)





PP



SP

QUESTION 3: PERSPECTIVE

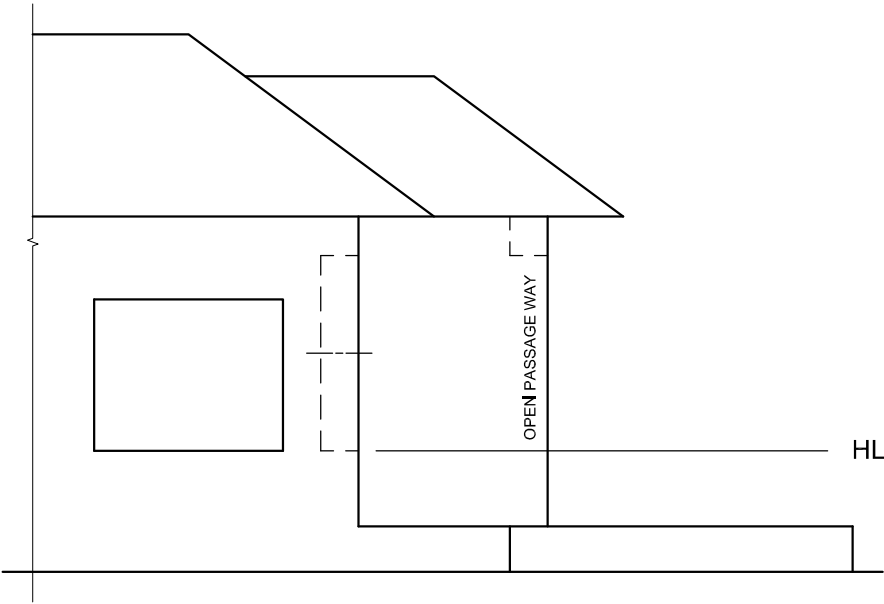
**Given:**  
Three views of a club house and the information needed to draw a two-point perspective drawing  
PP – Picture plane  
HL – Horizon line  
GL – Ground line  
SP – Station point

**Instructions:**  
Complete the perspective drawing.

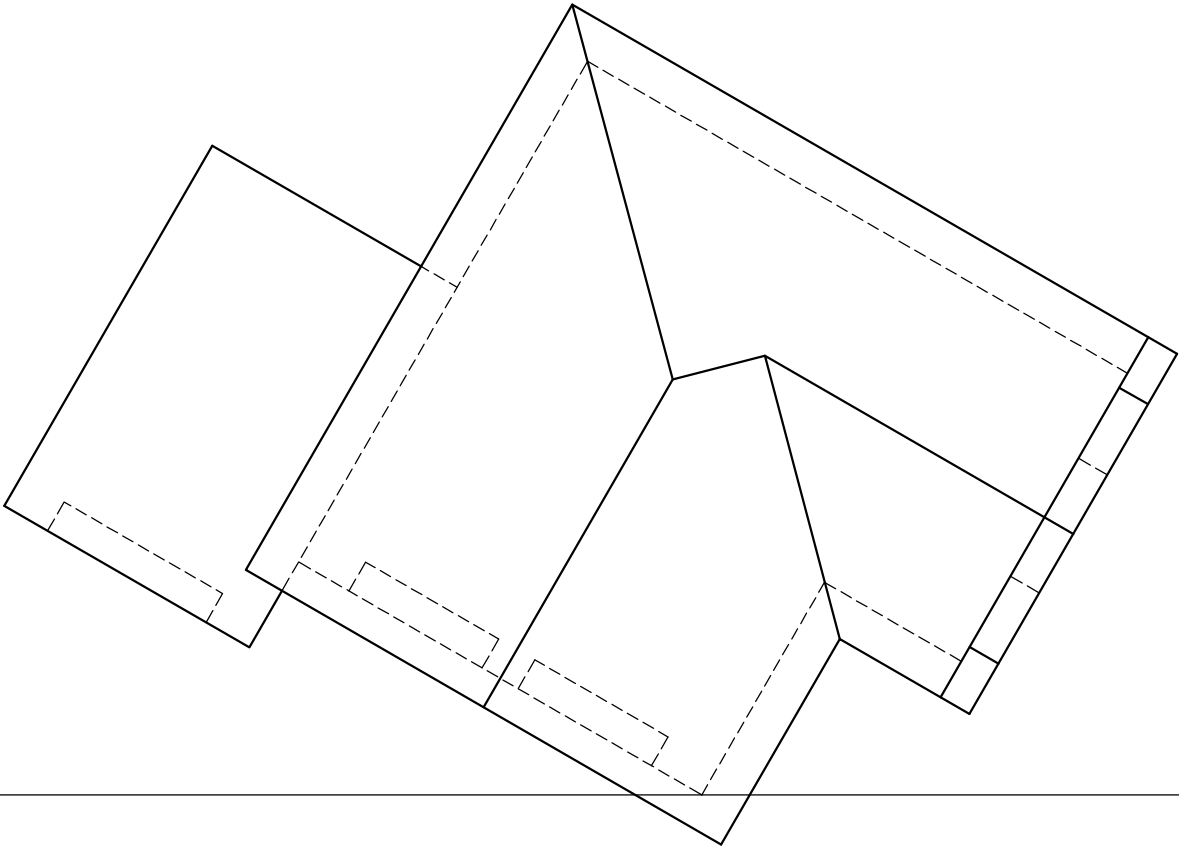
- Align the drawing sheet with the ground line (GL).
- Determine and label the vanishing points.
- Show ALL construction.
- Show depth at the windows.
- NO hidden detail is required.

[41]

ASSESSMENT CRITERIA					
1	CONSTRUCTION	6			
2	WALL + BASE	10 ½			
3	WINDOWS + OPENING	10			
4	ROOF	7 ½			
5	ARC	7			
PENALTIES (-)					
TOTAL		41			



EXAMINATION NUMBER	
EXAMINATION NUMBER	4



PP

HL

GL

SP

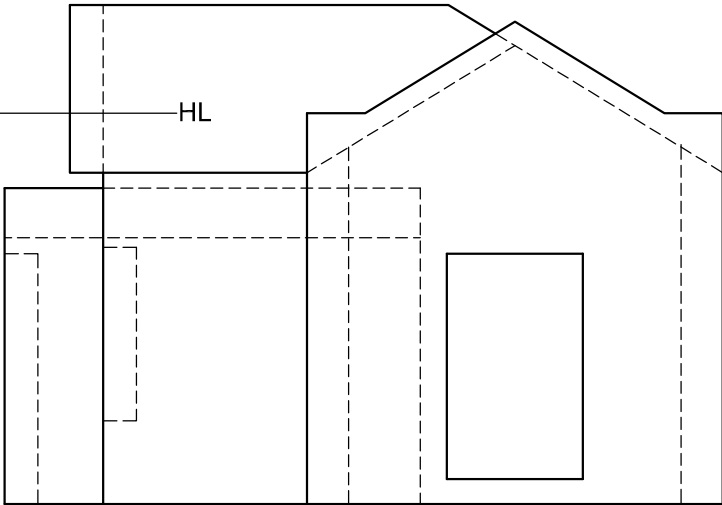
QUESTION 3: PERSPECTIVE

**Given:**  
Three views of a dwelling and the information needed to draw a two-point perspective drawing  
PP – Picture plane  
HL – Horizon line  
GL – Ground line  
SP – Station point

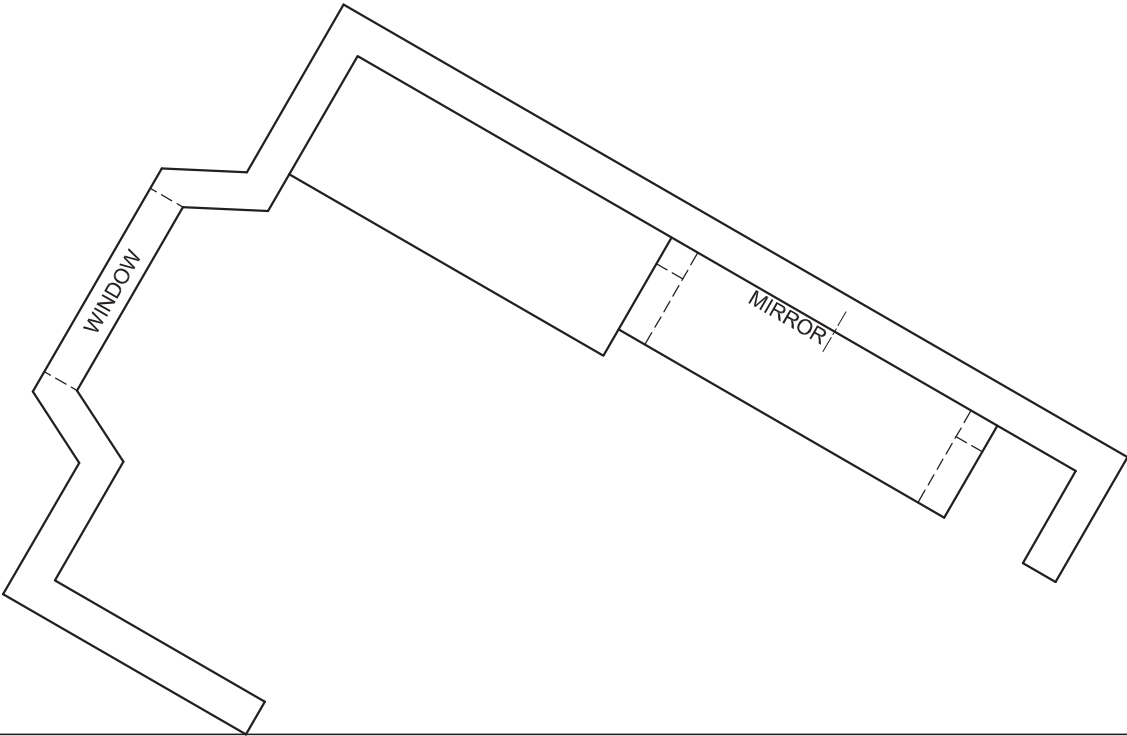
- Instructions:**  
Complete the perspective drawing.
- Align the drawing sheet with the ground line (GL).
  - Determine and label the vanishing points.
  - Show ALL construction.
  - Show depth at the doors and windows.
  - NO hidden detail or interior detail is required.

[38]

ASSESSMENT CRITERIA					
1	CONSTRUCTION	6			
2	WALLS	11 ½			
3	ROOF	5			
4	WINDOWS	10			
5	GARAGE	5 ½			
PENALTIES (-)					
TOTAL		38			



EXAMINATION NUMBER	
EXAMINATION NUMBER	4



QUESTION 3: PERSPECTIVE

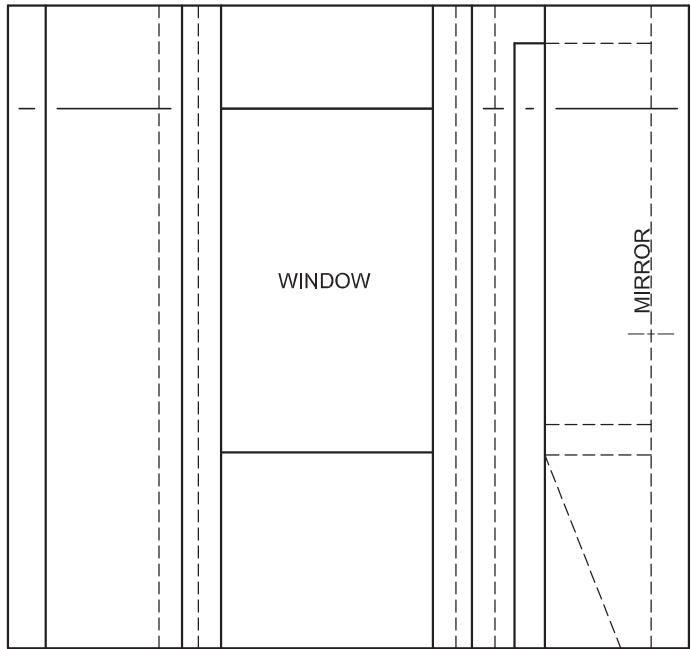
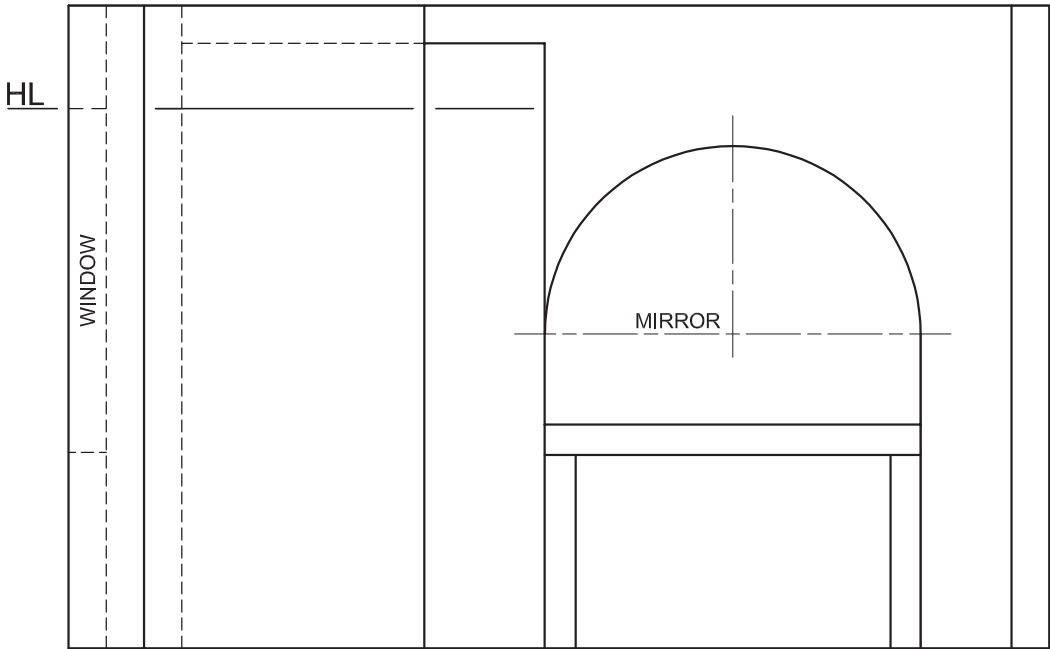
**Given:**  
Three views of the inside of a dressing room  
and the information needed to draw a two-point  
perspective drawing  
PP – Picture plane  
HL – Horizon line  
GL – Ground line  
SP – Station point

**Instructions:**  
Complete the perspective drawing.

- Align the drawing sheet with the ground line (GL).
- Determine and label the vanishing points.
- Show ALL construction.
- NO hidden detail is required.

[40]

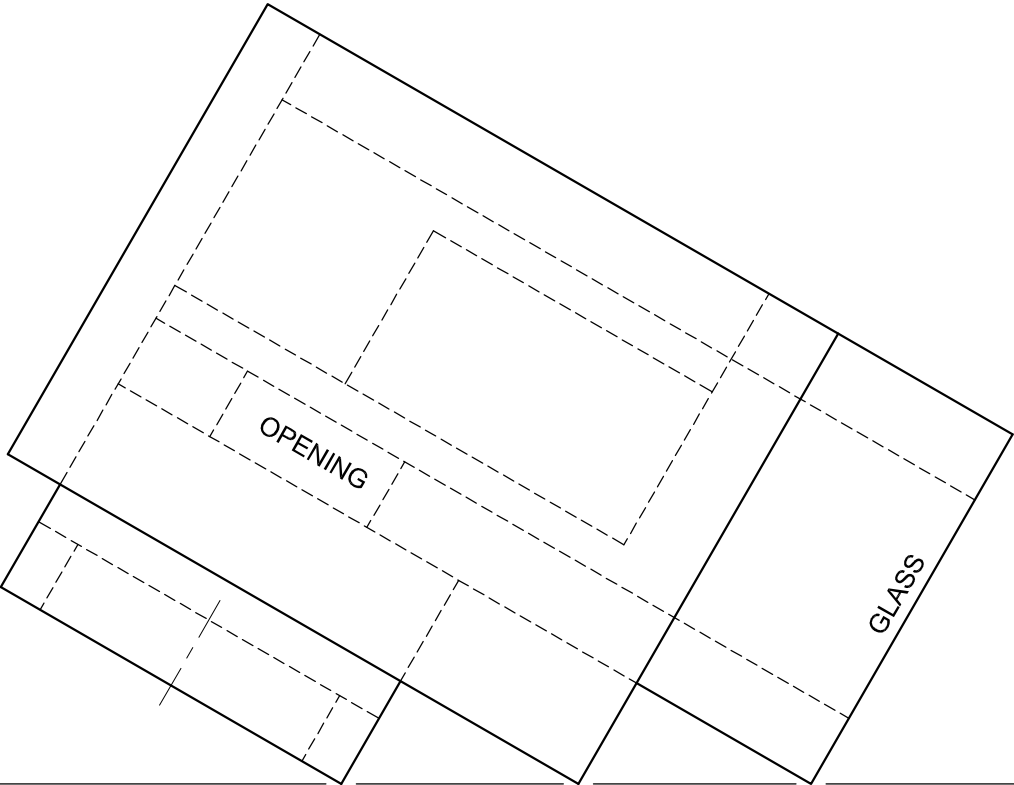
PP



SP

ASSESSMENT CRITERIA				
1	CONSTRUCTION	6		
2	WALLS + CUPBOARD + WINDOW	20		
3	TABLE + MIRROR	14		
PENALTIES (-)				
TOTAL		40		
EXAMINATION NUMBER				
EXAMINATION NUMBER				4

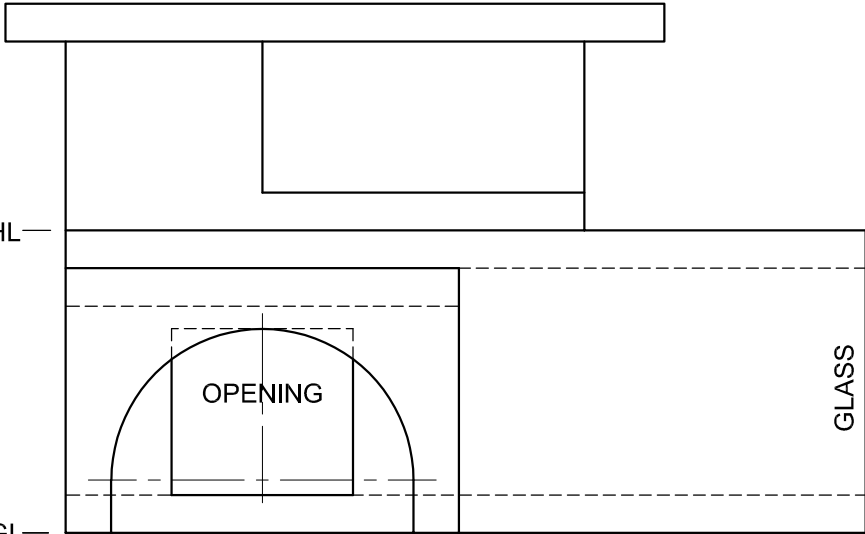




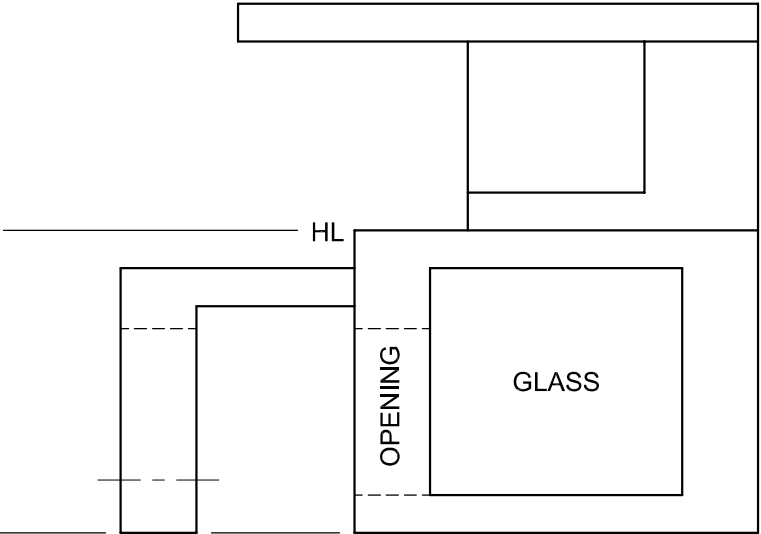
PP

HL

GL



SP



QUESTION 3: PERSPECTIVE

**Given:**  
Three views of a modern exhibition centre and the information needed to draw a two-point perspective drawing  
PP – Picture plane  
HL – Horizon line  
GL – Ground line  
SP – Station point

- Instructions:**  
Complete the perspective drawing.
- Align the drawing sheet with the ground line (GL).
  - Determine and label the vanishing points.
  - Show ALL construction.
  - Show ALL visible internal detail as seen through the opening and the glass.
  - NO hidden detail is required.

[39]

ASSESSMENT CRITERIA					
1	CONSTRUCTION	6			
2	LOWER SECTION	15			
3	UPPER SECTION	6			
4	ROOF	4 <sup>1</sup> / <sub>2</sub>			
5	ARC	7 <sup>1</sup> / <sub>2</sub>			
PENALTIES (-)					
TOTAL		39			

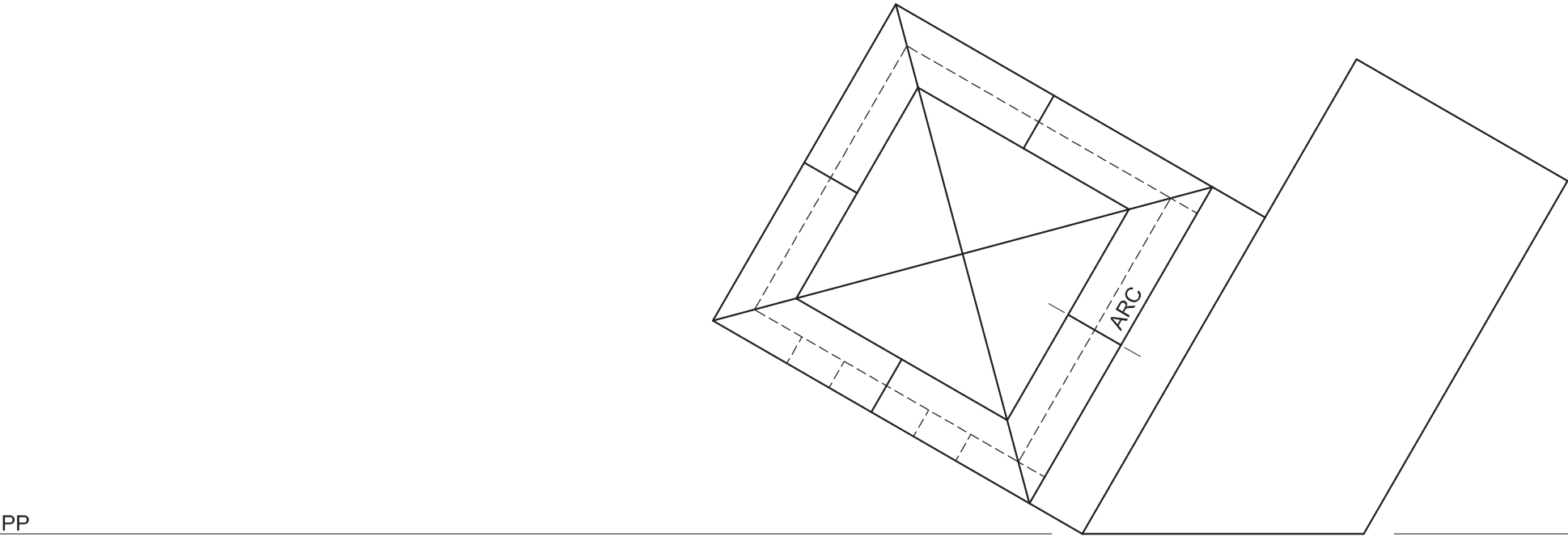


QUESTION 3: PERSPECTIVE

**Given:**  
Three views of a building and the information needed to draw a two-point perspective drawing  
PP – Picture plane  
HL – Horizon line  
GL – Ground line  
SP – Station point

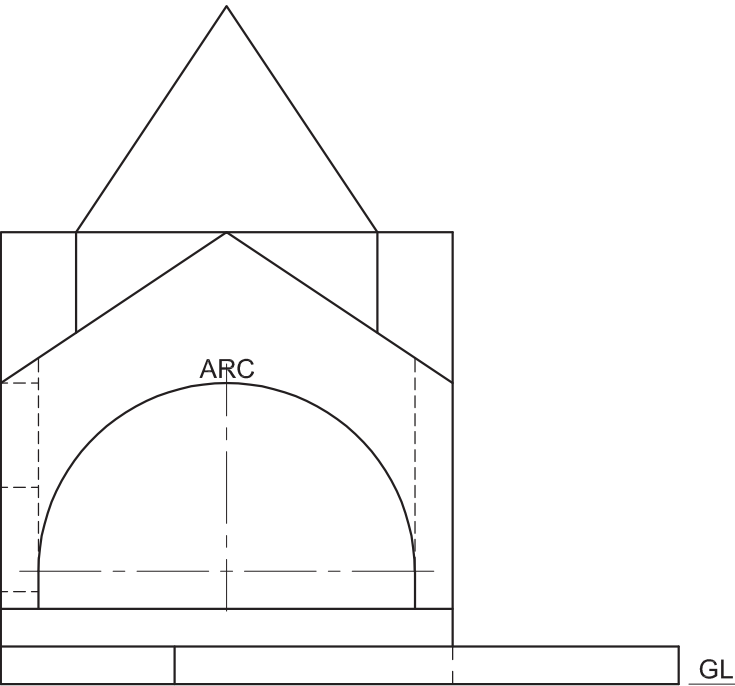
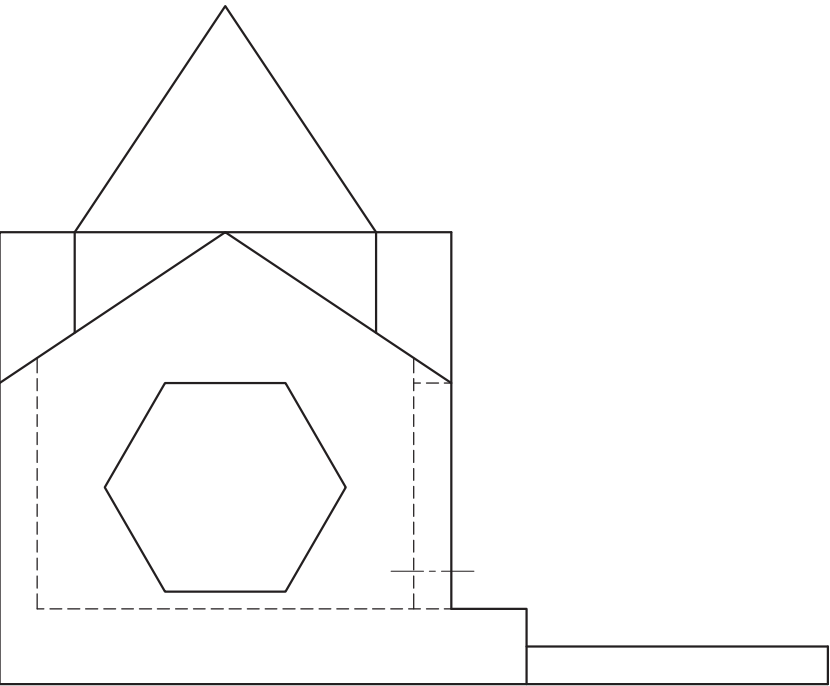
- Instructions:**  
Complete the perspective drawing.
- Align the drawing sheet with the ground line (GL).
  - Determine and label the vanishing points.
  - Show ALL construction.
  - Show internal lines seen through the hexagonal and arc openings.
  - NO hidden detail is required.
- [38]

ASSESSMENT CRITERIA					
1	CONSTRUCTION	6			
2	WALLS	10½			
3	HEXAGONAL OPENING	5½			
4	ROOF	9½			
5	ARC	6½			
PENALTIES (-)					
TOTAL		38			



PP

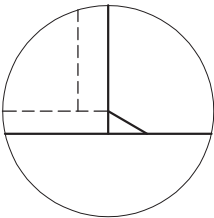
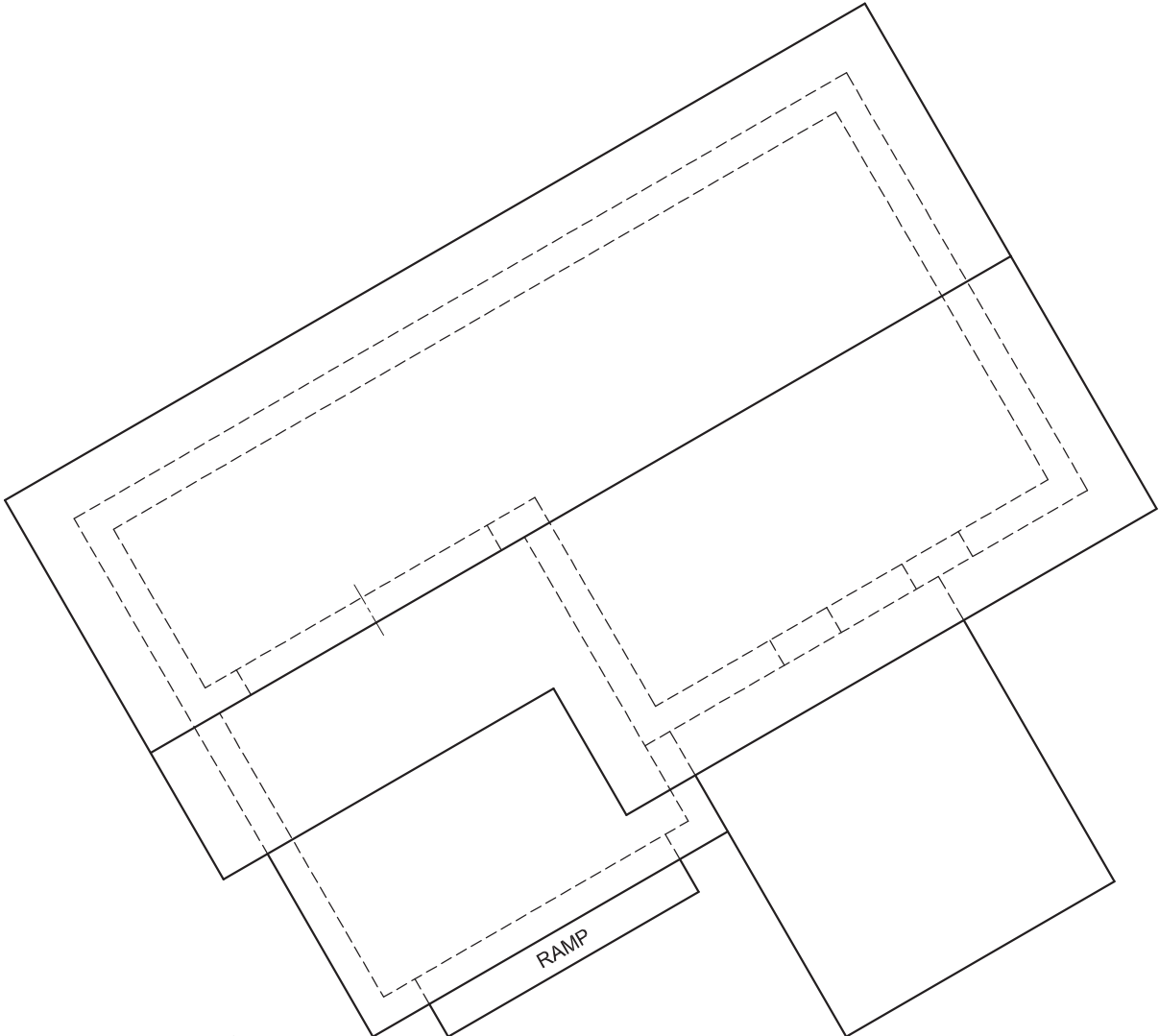
HL



SP

GL

EXAMINATION NUMBER	
EXAMINATION NUMBER	4



DETAIL OF RAMP

PP

QUESTION 3: PERSPECTIVE

**Given:**  
Two views of a house with a pitched roof, the detail of the ramp and the information needed to draw a two-point perspective drawing  
PP – Picture plane  
HL – Horizon line  
GL – Ground line  
SP – Station point

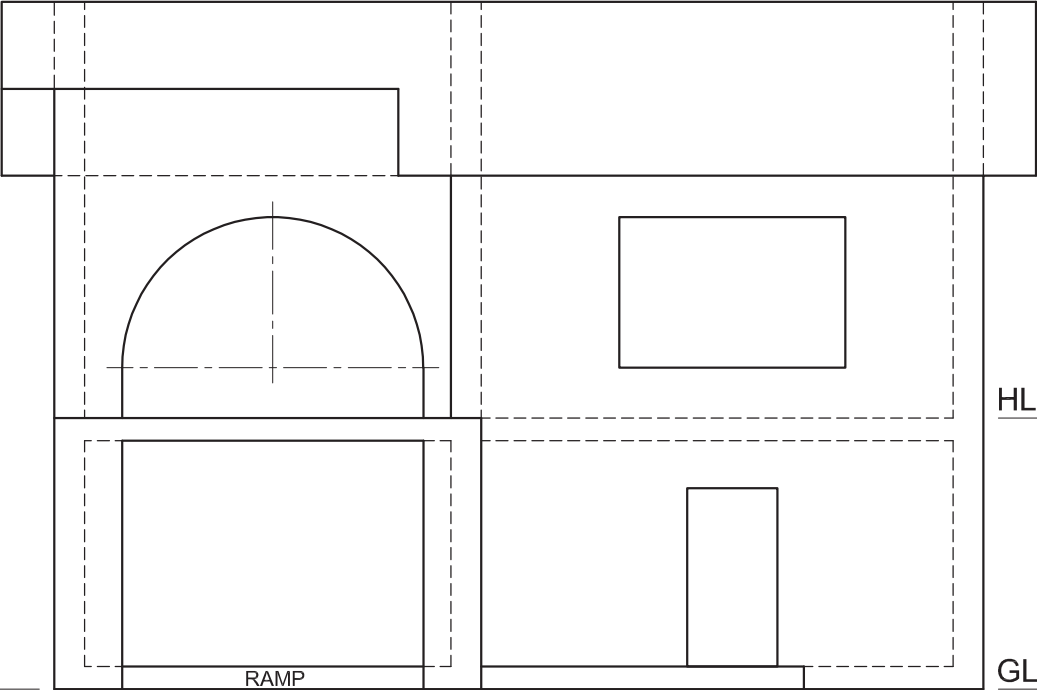
- Instructions:**  
Complete the perspective drawing.
- Align the drawing sheet with the ground line (GL).
  - Determine and label the vanishing points.
  - Show ALL construction.
  - NO interior detail is required.
  - NO hidden detail is required.
- [39]

ASSESSMENT CRITERIA					
1	CONSTRUCTION	6			
2	WALLS	13			
3	DOORS + WINDOWS	8½			
4	ROOF	4½			
5	ARCS	7			
PENALTIES (-)					
TOTAL		39			

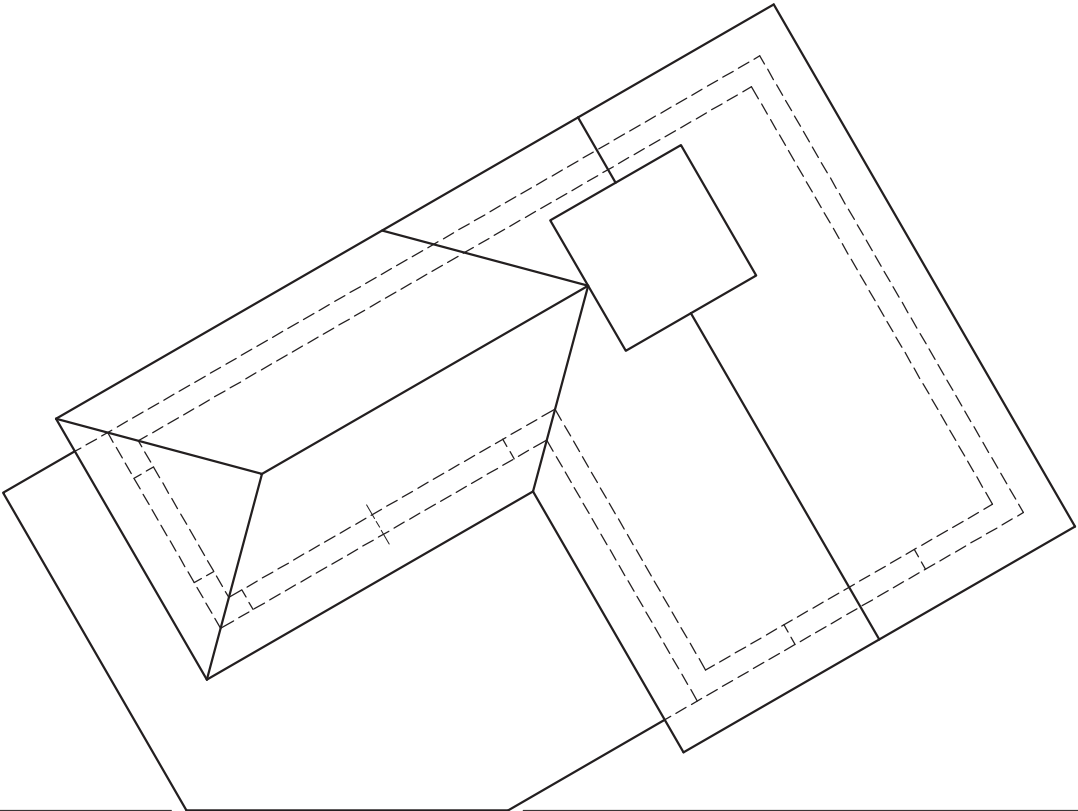
HL

GL

SP



EXAMINATION NUMBER	
EXAMINATION NUMBER	4



PP

QUESTION 3: PERSPECTIVE

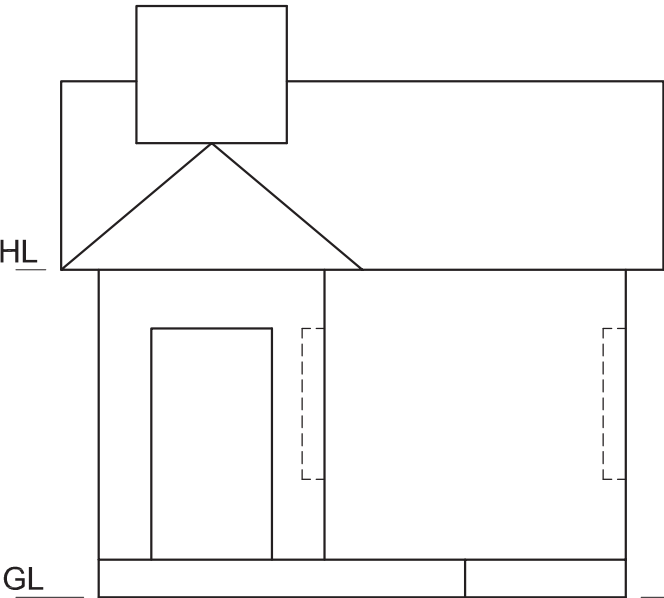
**Given:**  
Three views of a building and the information needed to draw a two-point perspective drawing  
PP – Picture plane  
HL – Horizon line  
GL – Ground line  
SP – Station point

**Instructions:**  
Complete the perspective drawing.

- Align the drawing sheet with the ground line (GL).
- Determine and label the vanishing points.
- Show ALL construction.
- NO interior detail is required.
- NO hidden detail is required.

[38]

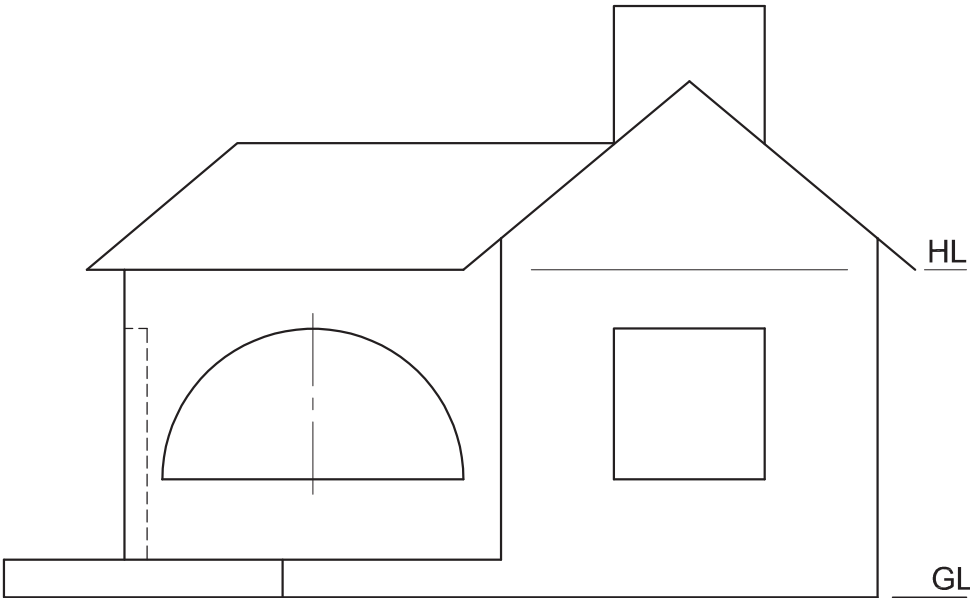
ASSESSMENT CRITERIA					
1	CONSTRUCTION	6			
2	FLOOR AND WALLS	10			
3	DOOR AND WINDOWS	13 <sup>1</sup> / <sub>2</sub>			
4	ROOF	8 <sup>1</sup> / <sub>2</sub>			
PENALTIES (-)					
TOTAL		38			



HL

GL

SP



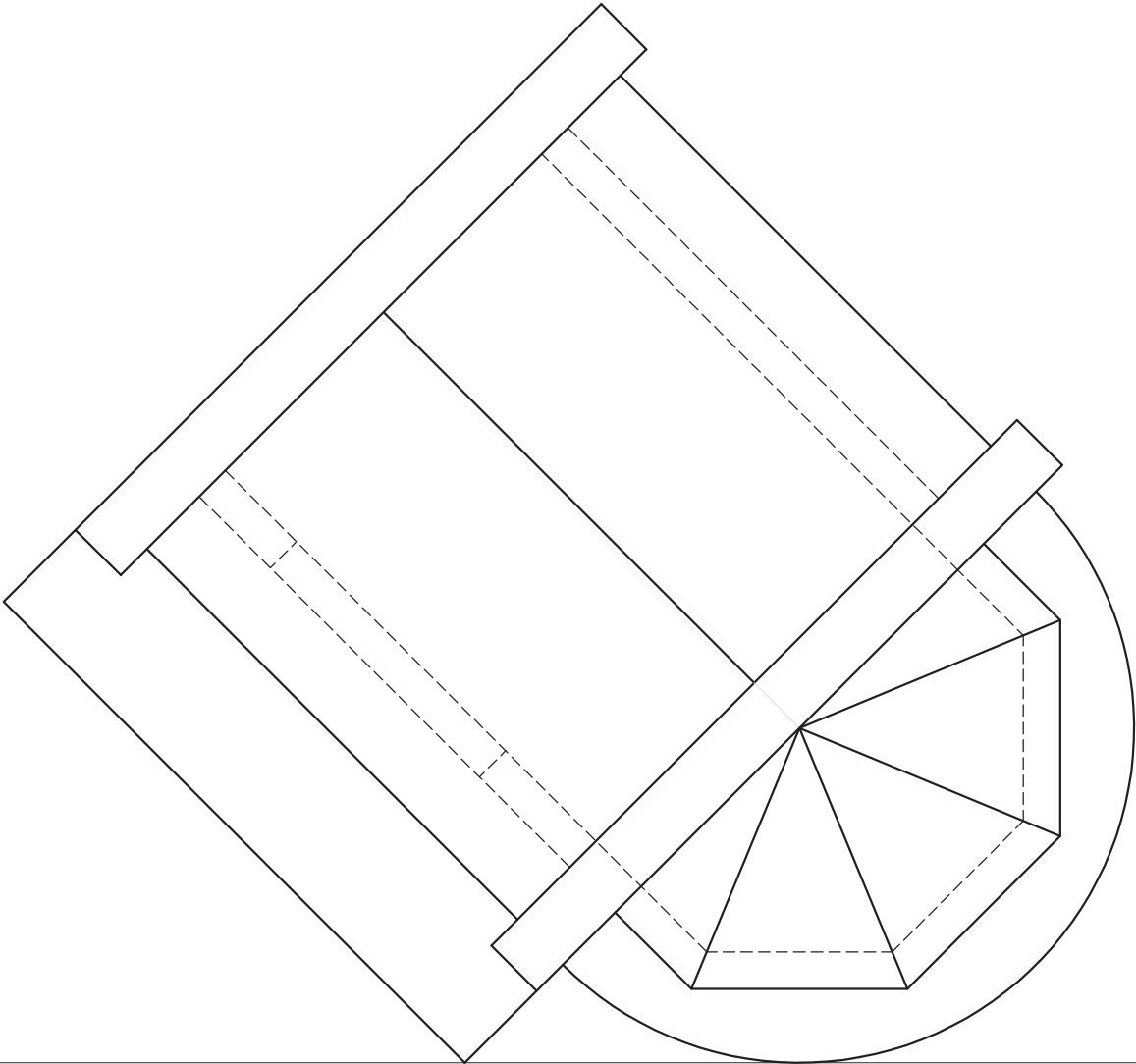
HL

GL



EXAMINATION NUMBER	
EXAMINATION NUMBER	4





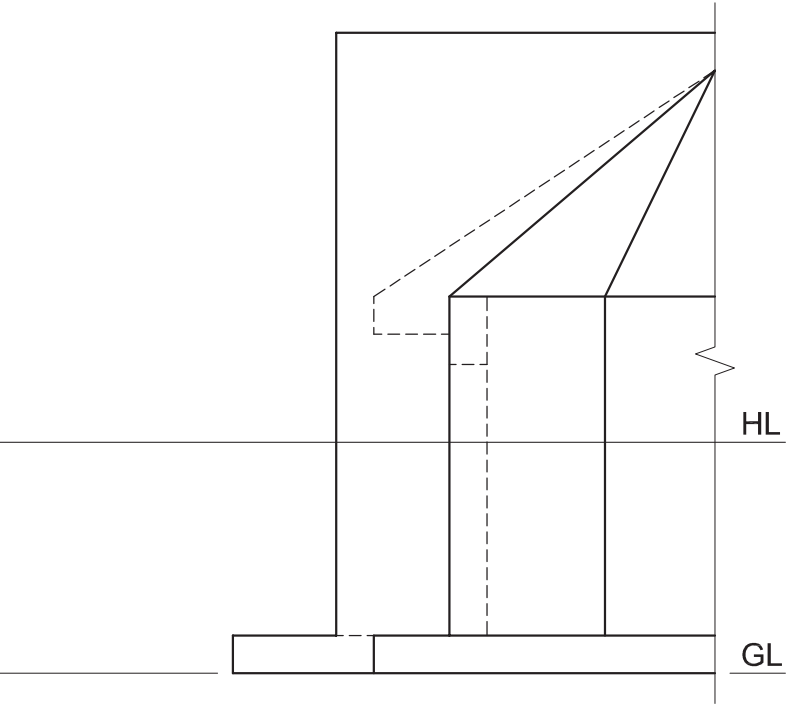
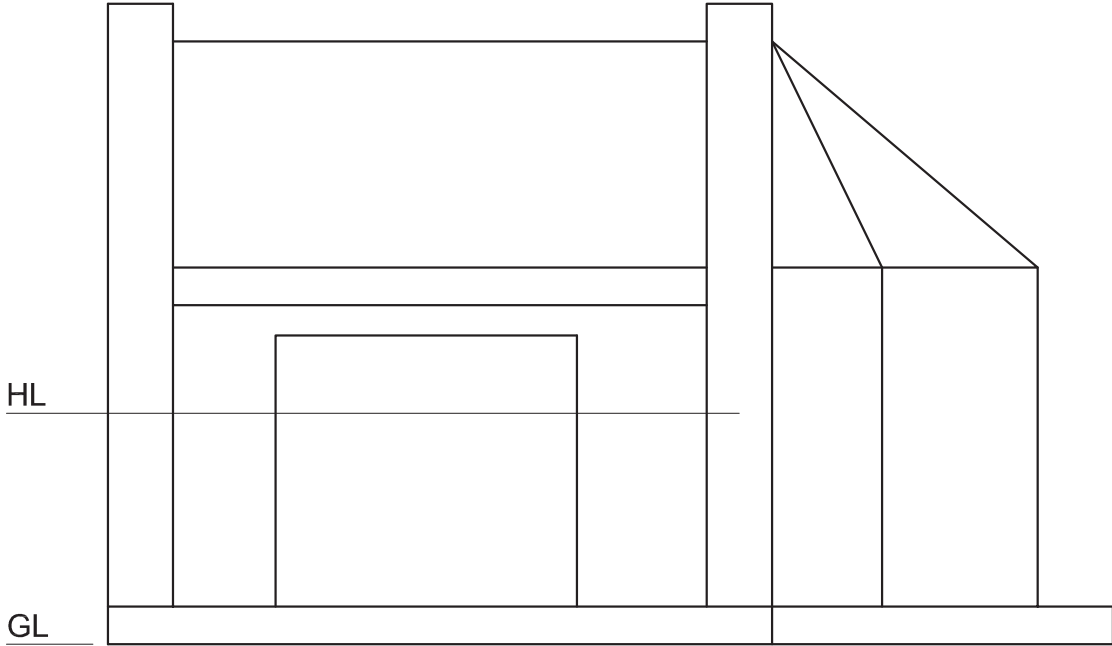
QUESTION 3: PERSPECTIVE

**Given:**  
Two complete views and a partial view of a function hall and the information needed to draw a two-point perspective drawing  
PP – Picture plane  
HL – Horizon line  
GL – Ground line  
SP – Station point

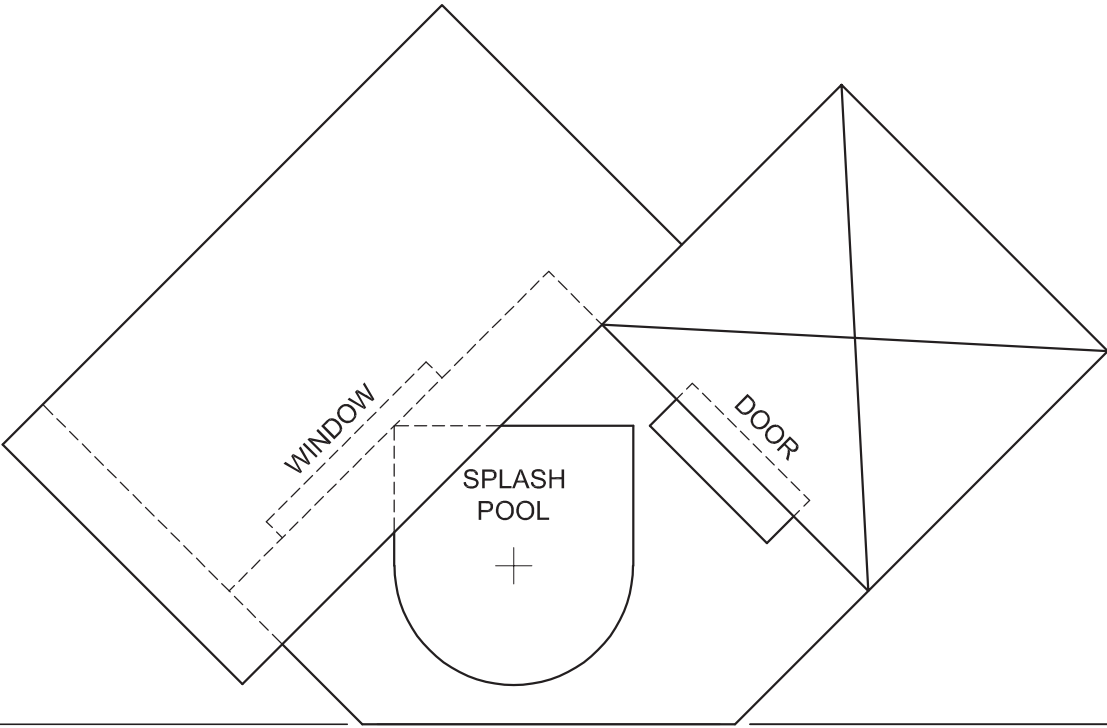
- Instructions:**  
Complete the perspective drawing.
- Align the drawing sheet with the ground line (GL).
  - Determine and label the vanishing points.
  - Show internal lines seen through the doorway.
  - Show ALL construction.
  - NO hidden detail is required.
- [37]

ASSESSMENT CRITERIA					
1	CONSTRUCTION	6			
2	OUTER STRUCTURE	9 <sup>1</sup> / <sub>2</sub>			
3	INNER STRUCTURE	8			
4	SIDE STRUCTURE	7			
5	ARCS	6 <sup>1</sup> / <sub>2</sub>			
PENALTIES (-)					
TOTAL		37			

PP



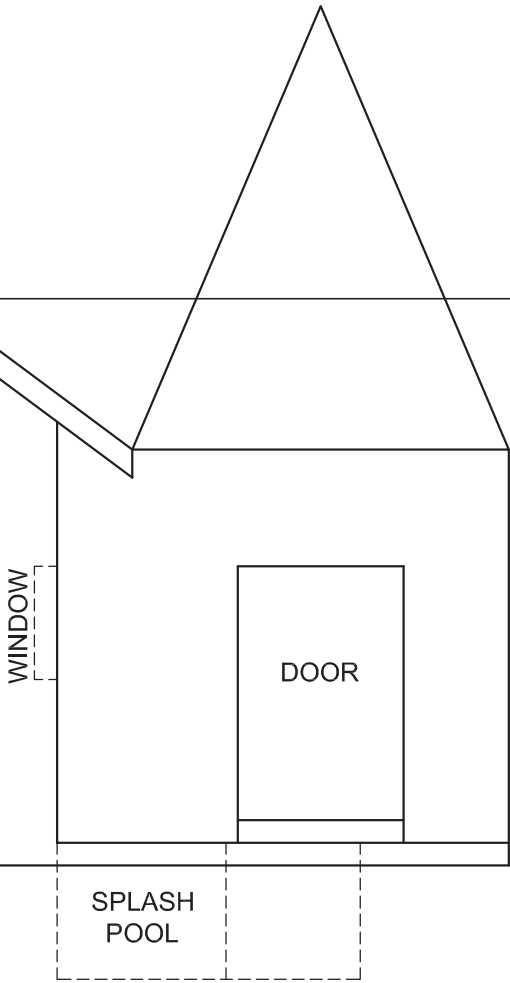
EXAMINATION NUMBER	
EXAMINATION NUMBER	4



PP

HL

GL



**QUESTION 3: PERSPECTIVE**

**Given:**

Two views of a structure and the information needed to draw a two-point perspective drawing

PP – Picture plane

HL – Horizon line

GL – Ground line

SP – Station point

**Instructions:**

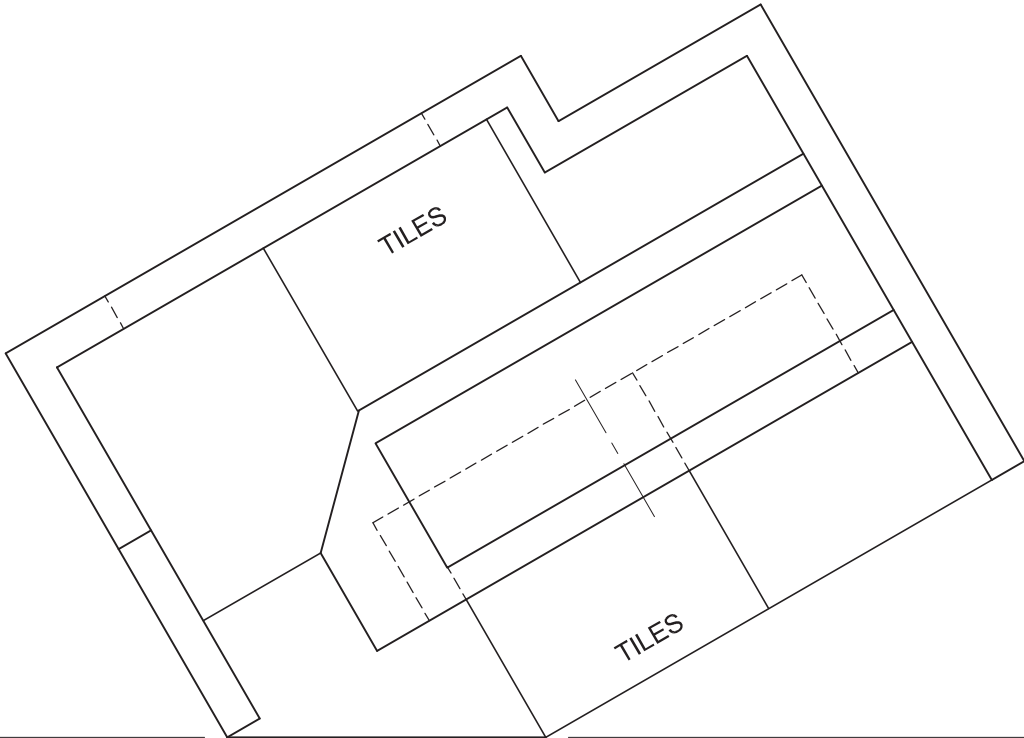
Complete the perspective drawing.

- Align the drawing sheet with the ground line (GL).
- Determine and label the vanishing points.
- Show depth at the door and window.
- Show ALL construction.
- NO hidden detail is required.

[38]

ASSESSMENT CRITERIA					
1	CONSTRUCTION	7			
2	WALLS, WINDOW, DOOR	16 <sup>1</sup> / <sub>2</sub>			
3	SPLASH POOL	7			
4	ROOF	7 <sup>1</sup> / <sub>2</sub>			
PENALTIES (-)					
TOTAL		38			
EXAMINATION NUMBER					
EXAMINATION NUMBER					4





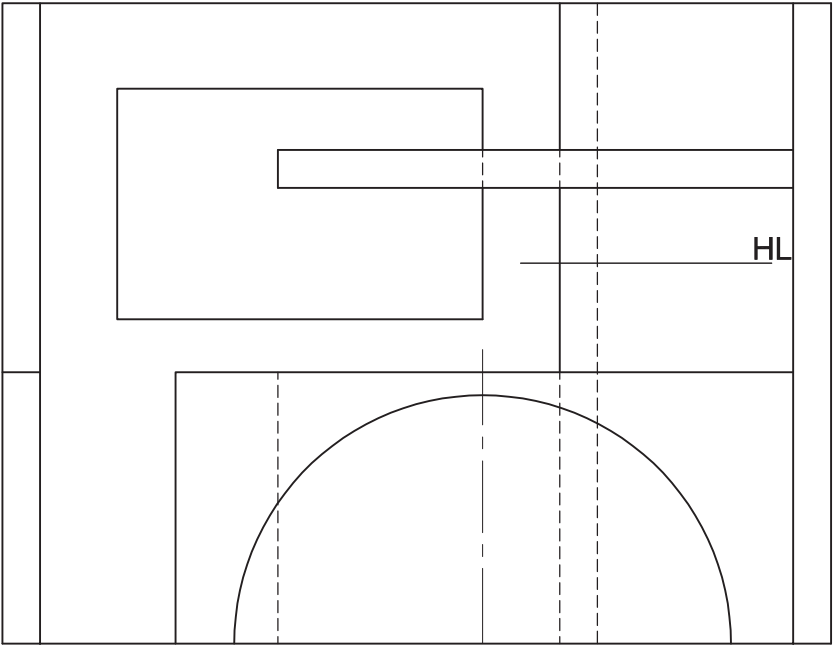
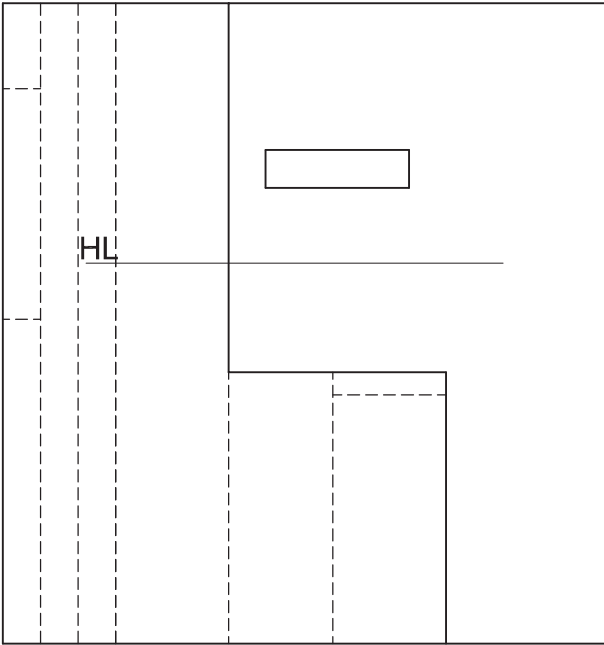
PP

QUESTION 3: PERSPECTIVE

**Given:**  
Three views of a serving area and the information needed to draw a two-point perspective drawing  
PP – Picture plane  
HL – Horizon line  
GL – Ground line  
SP – Station point

- Instructions:**  
Complete the perspective drawing.
- Align the drawing sheet with the ground line (GL).
  - Determine and label the vanishing points.
  - Show ALL construction.
  - NO hidden detail is required.

[40]

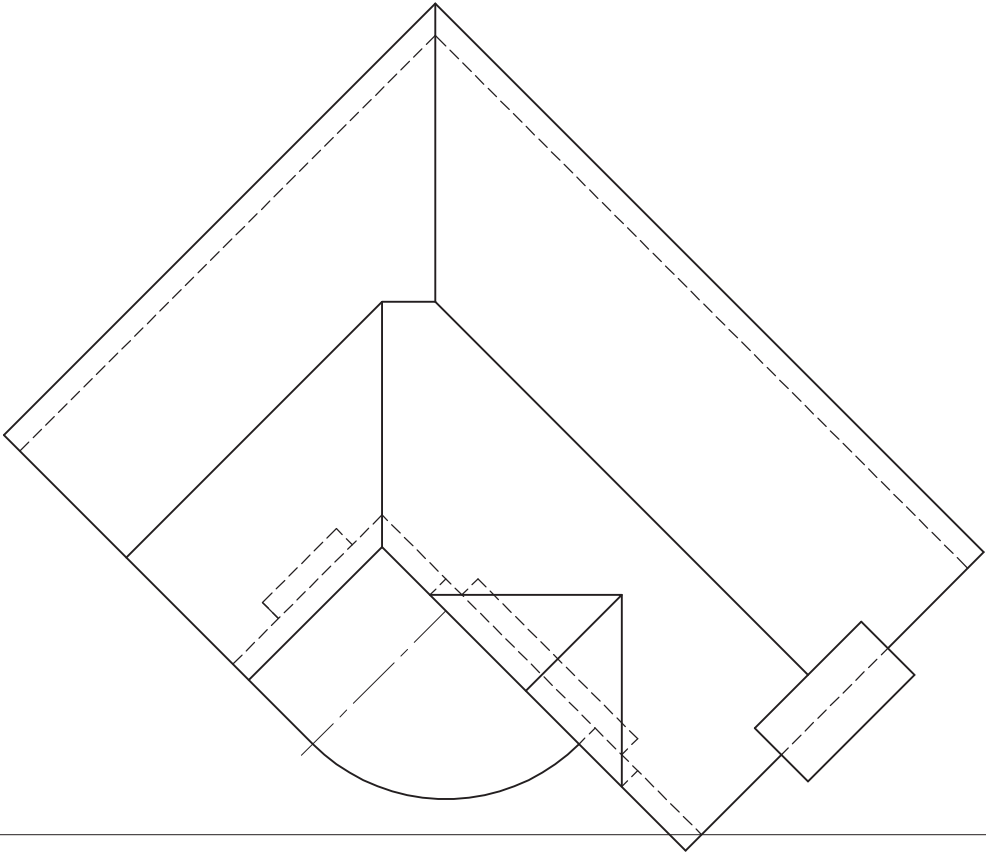


SP

ASSESSMENT CRITERIA					
1	CONSTRUCTION	6			
2	WALLS AND WINDOW	17½			
3	SERVING AREA	11			
4	SEMICIRCLE	5½			
PENALTIES (-)					
TOTAL		40			

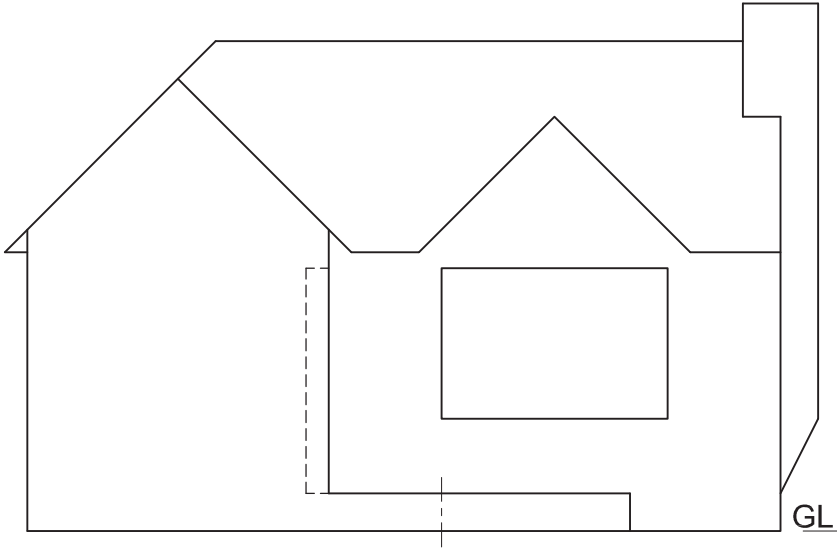
EXAMINATION NUMBER	
EXAMINATION NUMBER	
4	



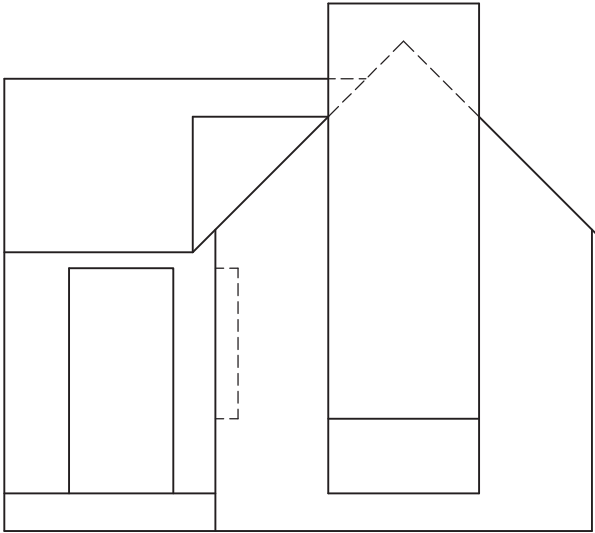


PP

HL



GL



SP

QUESTION 3: PERSPECTIVE

**Given:**  
Three views of a house and the information needed to draw a two-point perspective drawing  
PP – Picture plane  
HL – Horizon line  
GL – Ground line  
SP – Station point

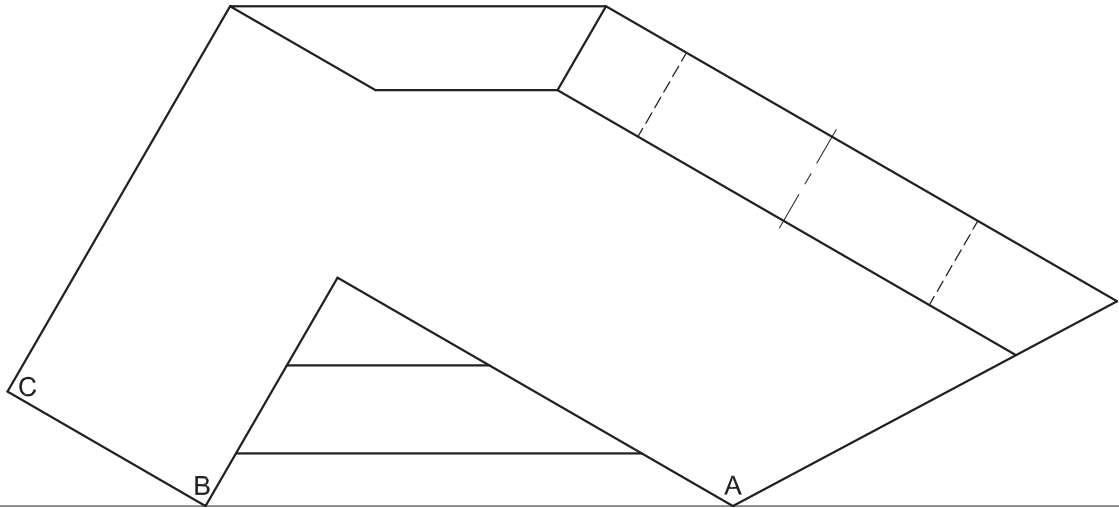
**Instructions:**  
Complete the perspective drawing.

- Align the drawing sheet with the ground line (GL).
- Determine and label the vanishing points.
- Show ALL construction.
- NO internal detail is required.
- NO hidden detail is required.

[40]

ASSESSMENT CRITERIA					
1	CONSTRUCTION	6			
2	WALLS, WINDOW, DOOR	13			
3	CHIMNEY	6			
4	ROOF	10			
5	ARC	5			
PENALTIES (-)					
TOTAL		40			
EXAMINATION NUMBER					
EXAMINATION NUMBER					4



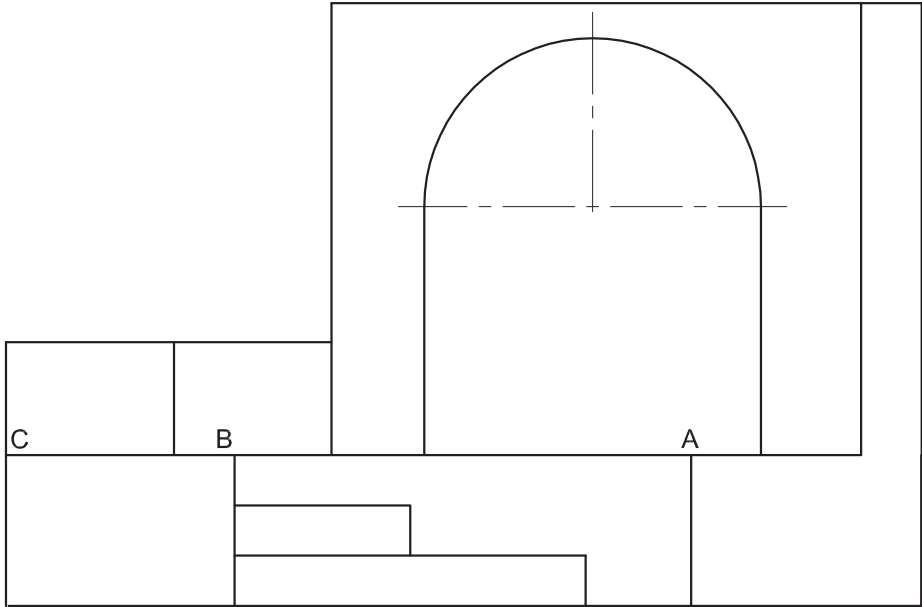


PP

HL

SP

GL



**QUESTION 3: PERSPECTIVE**

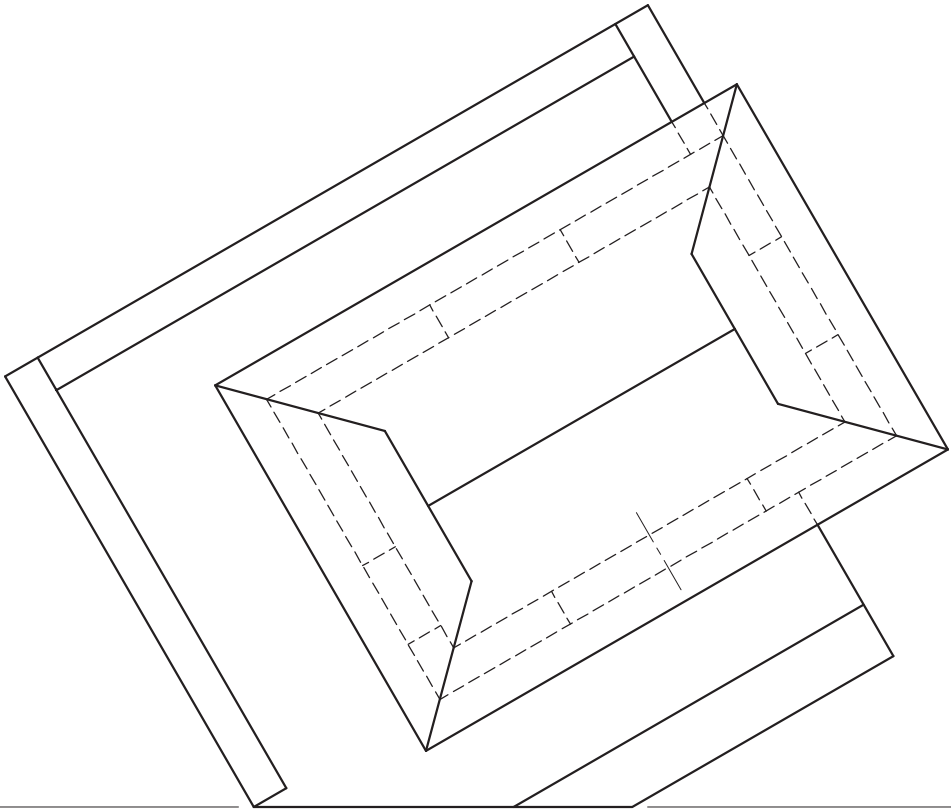
**Given:**  
Two views of a stage for a play and the information needed to draw a two-point perspective drawing  
PP – Picture plane  
HL – Horizon line  
GL – Ground line  
SP – Station point

- Instructions:**  
Complete the perspective drawing.
- Align the drawing sheet with the ground line (GL).
  - Determine and label the vanishing points.
  - Show ALL construction.
  - NO hidden detail is required.

[37]

ASSESSMENT CRITERIA					
1	CONSTRUCTION + VPs	7			
2	STEPS + FLOOR + WALLS	23			
3	CIRCULAR ARC	7			
PENALTIES (-)					
TOTAL		37			
EXAMINATION NUMBER					
EXAMINATION NUMBER					4





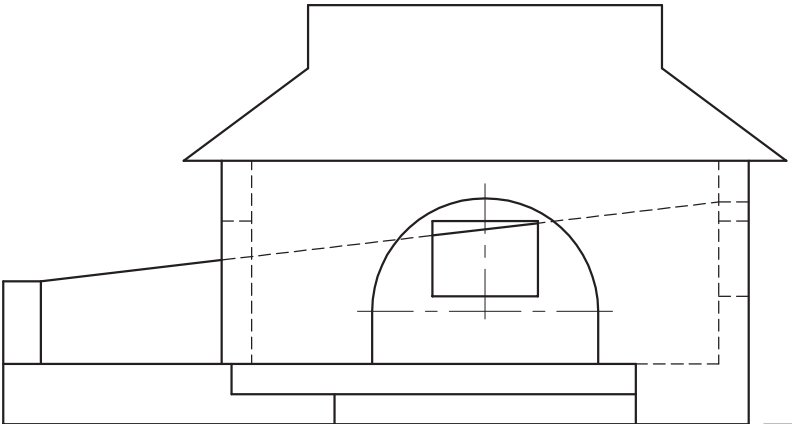
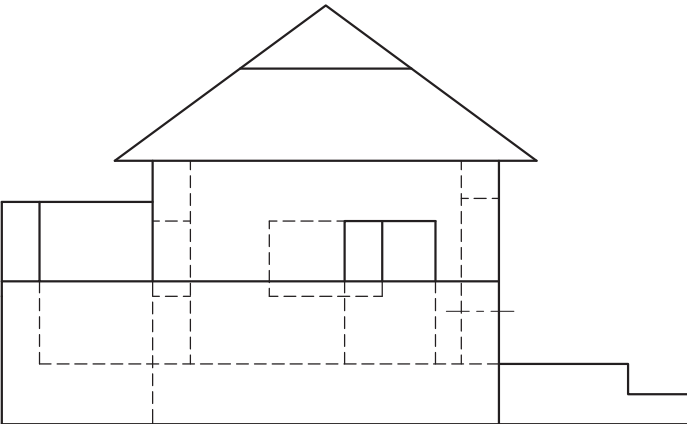
PP

PP

HL

HL

GL



SP

**QUESTION 3: PERSPECTIVE**

**Given:**  
Three views of a shelter with a viewing deck and the information needed to draw a two-point perspective drawing  
PP – Picture plane  
HL – Horizon line  
GL – Ground line  
SP – Station point

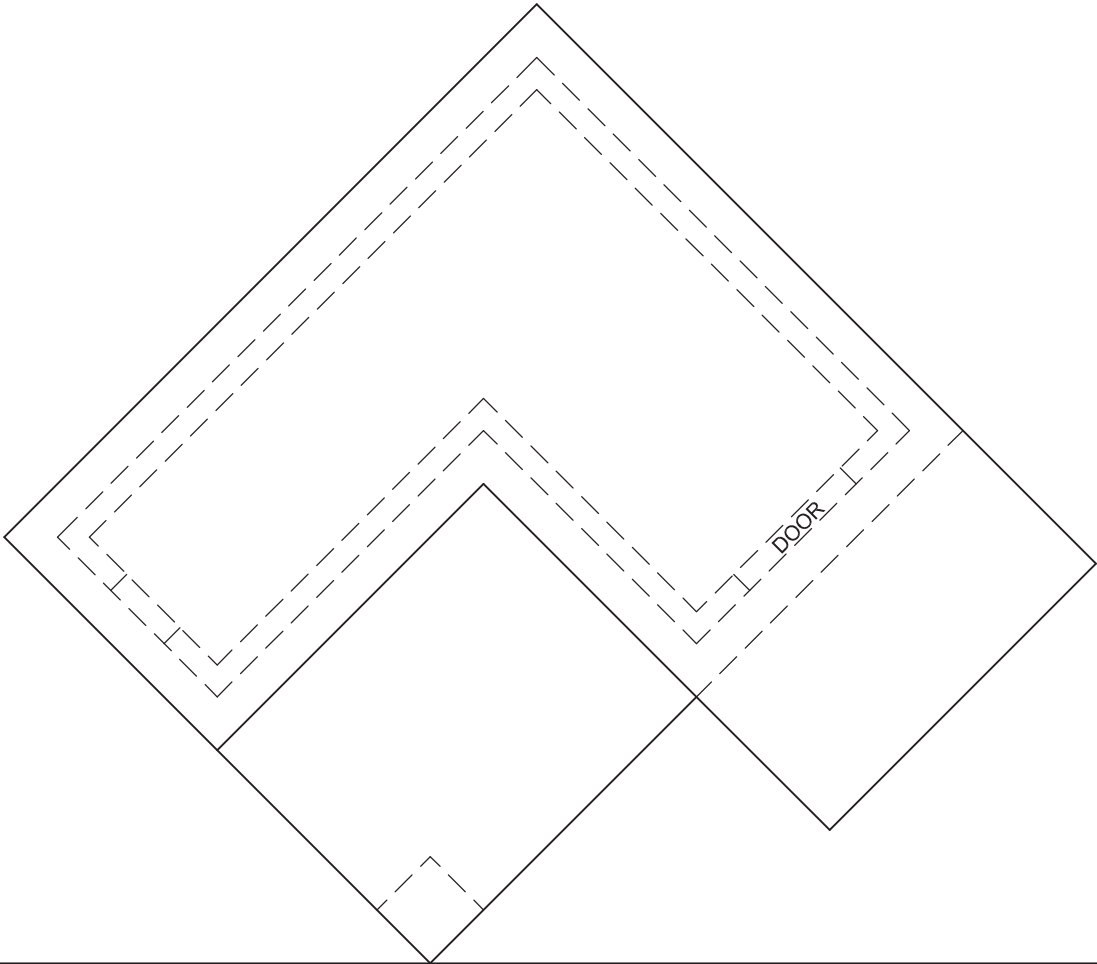
**Instructions:**  
Complete the perspective drawing.

- Align the drawing sheet with the ground line (GL).
- Determine and label the vanishing points.
- Show ALL necessary construction.
- NO hidden detail is required.

**[40]**

ASSESSMENT CRITERIA					
1	CONSTRUCTION + VPs	7			
2	WALLS + DOORS	22			
3	ROOF	5			
4	CIRCULAR ARC	6			
TOTAL		40			
EXAMINATION NUMBER					
EXAMINATION NUMBER					4





**QUESTION 3: PERSPECTIVE**

**Given:**  
Three views of a double-storey dwelling and the information needed to draw a two-point perspective drawing.  
PP – Picture plane  
HL – Horizon line  
GL – Ground line  
SP – Station point

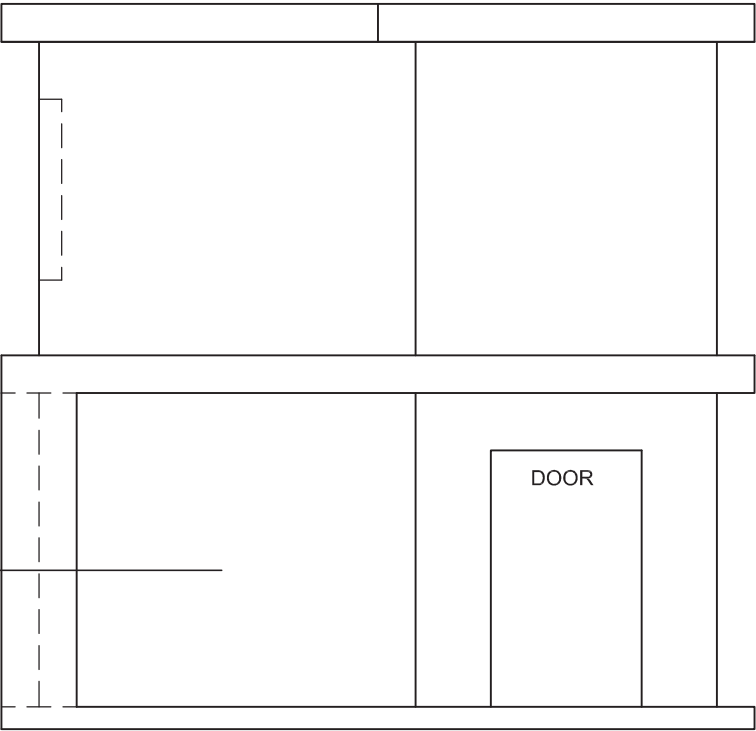
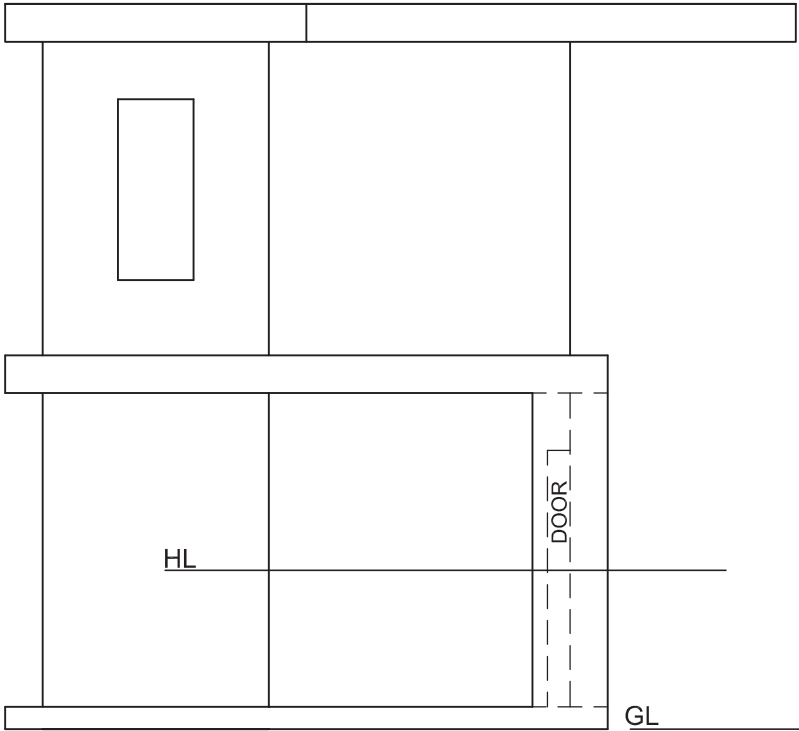
**Instructions:**  
Complete the perspective drawing.

- Align the drawing sheet with the ground line (GL).
- Determine and label the vanishing points.
- Show ALL necessary construction.
- NO hidden detail is required.

[39]

**ASSESSMENT CRITERIA**

1	CONSTRUCTION + VPs	5			
2	FLOOR	4			
3	GROUND FLOOR	12			
4	FIRST FLOOR	12			
5	WINDOW + DOOR	6			
PENALTIES (-)					
TOTAL		39			

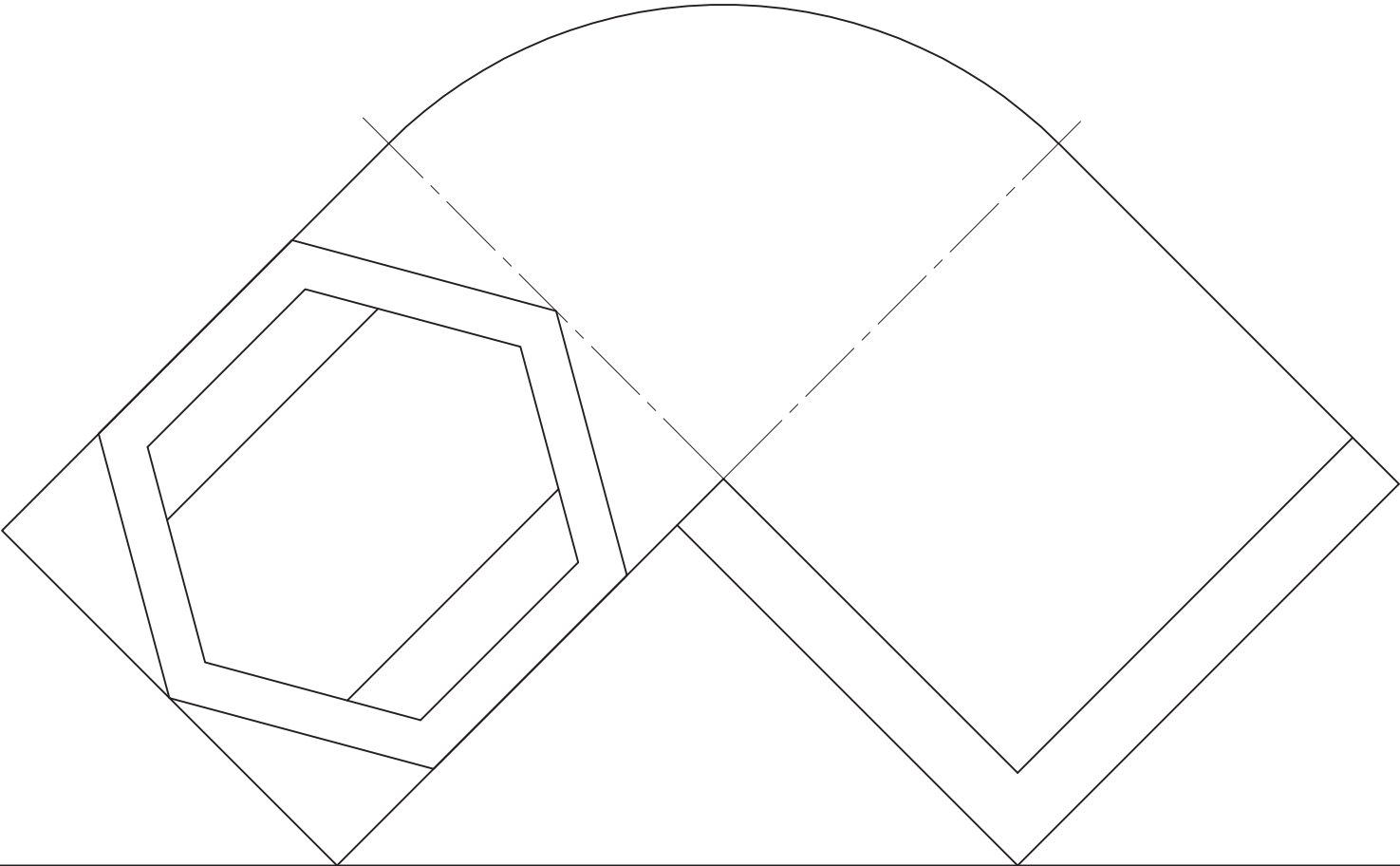


EXAMINATION NUMBER

EXAMINATION NUMBER

4





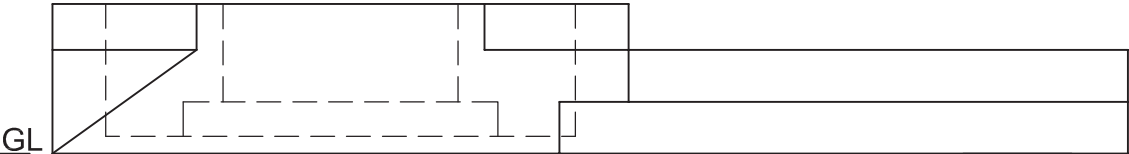
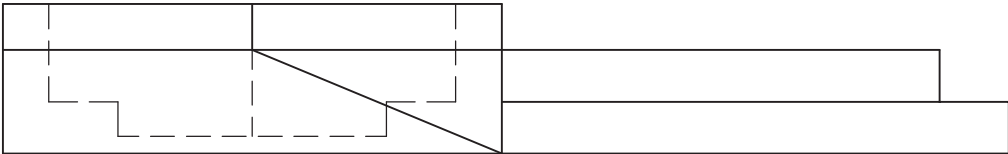
QUESTION 3: PERSPECTIVE

**Given:**  
Three views of a wooden deck with a hexagonal pool and the information needed to draw a two-point perspective drawing.  
PP – Picture plane  
HL – Horizon line  
GL – Ground line  
SP – Station point

**Instructions:**  
Complete the perspective drawing.

- Align the drawing sheet with the ground line (GL).
- Determine and label the vanishing points.
- Show ALL necessary construction.
- NO hidden detail is required. **[39]**

ASSESSMENT CRITERIA					
1	CONSTRUCTION + VPs	6			
2	BASE + STAIRS	12½			
3	POOL	13½			
4	CIRCULAR ARC	7			
PENALTIES (-)					
TOTAL		39			



⊕  
SP

GL

EXAMINATION NUMBER

EXAMINATION NUMBER

4





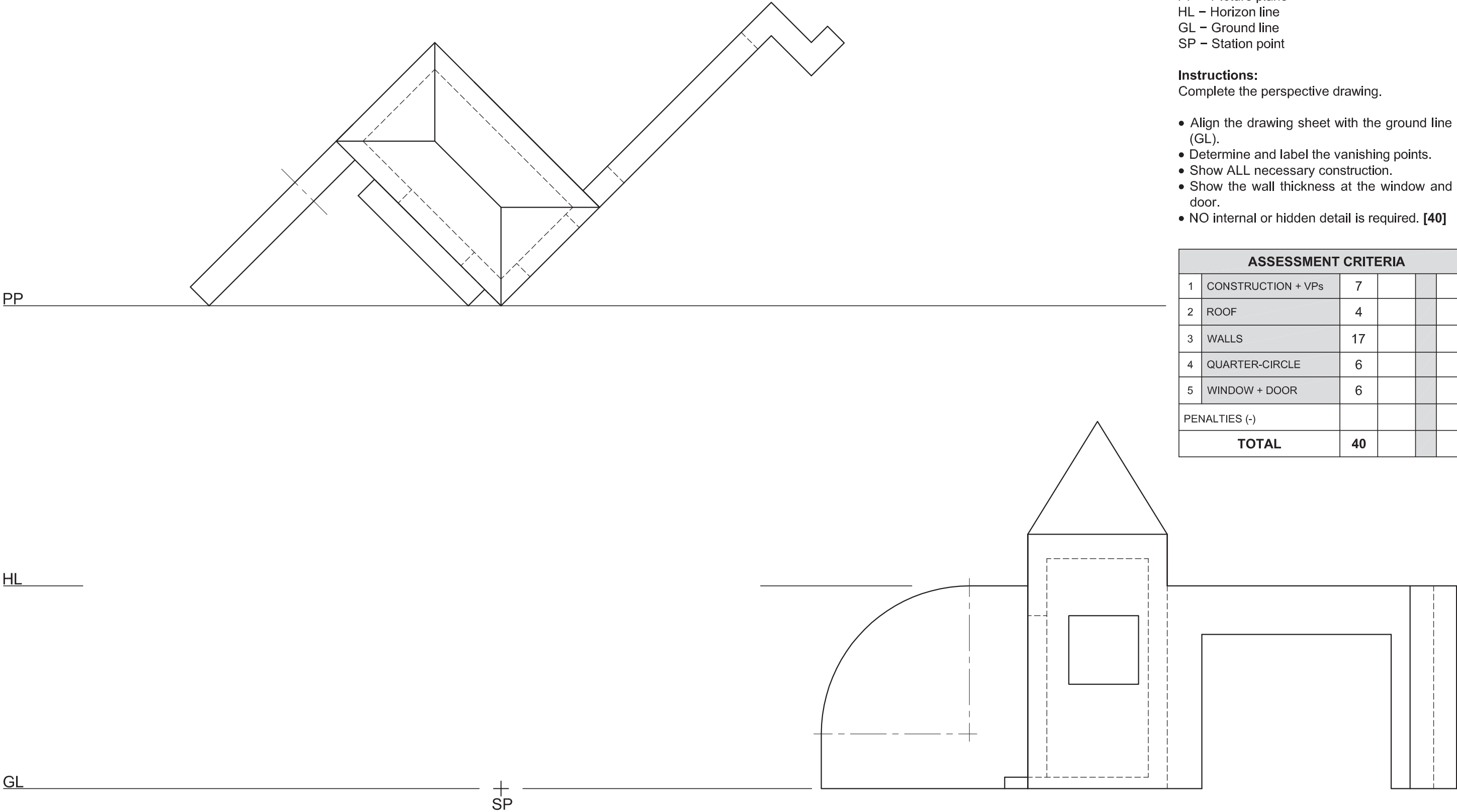
QUESTION 3: PERSPECTIVE

**Given:**  
Two views of an entrance with a control point and the information needed to draw a two-point perspective drawing  
PP – Picture plane  
HL – Horizon line  
GL – Ground line  
SP – Station point

**Instructions:**  
Complete the perspective drawing.

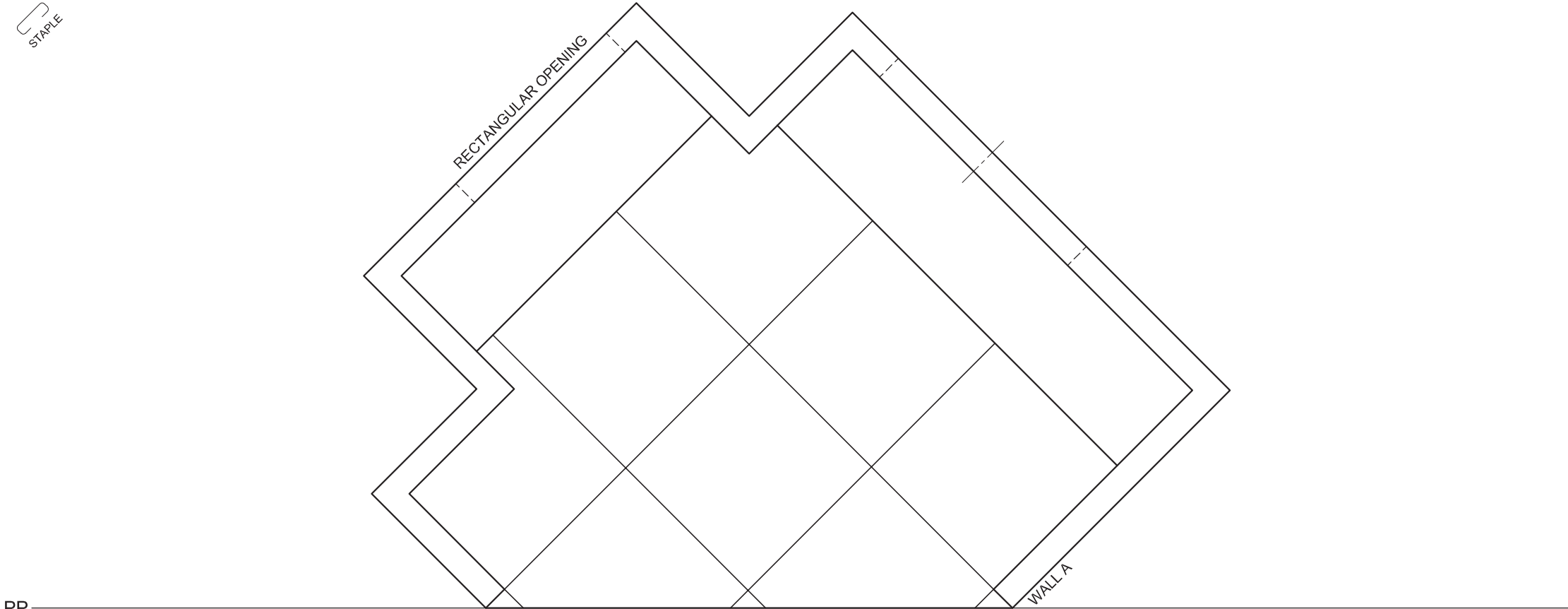
- Align the drawing sheet with the ground line (GL).
- Determine and label the vanishing points.
- Show ALL necessary construction.
- Show the wall thickness at the window and door.
- NO internal or hidden detail is required. **[40]**

ASSESSMENT CRITERIA					
1	CONSTRUCTION + VPs	7			
2	ROOF	4			
3	WALLS	17			
4	QUARTER-CIRCLE	6			
5	WINDOW + DOOR	6			
PENALTIES (-)					
TOTAL		40			



EXAMINATION NUMBER	
EXAMINATION NUMBER	4



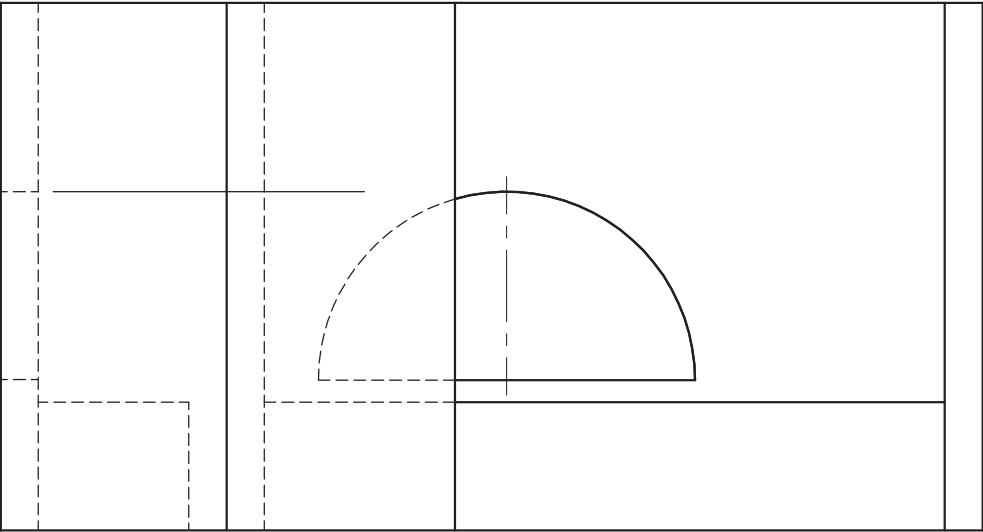


PP

HL

GL

SP



WALL A

QUESTION 3: PERSPECTIVE

**Given:**  
Two views of an outside entertainment area and the information needed to draw a two-point perspective drawing  
PP – Picture plane  
HL – Horizon line  
GL – Ground line  
SP – Station point

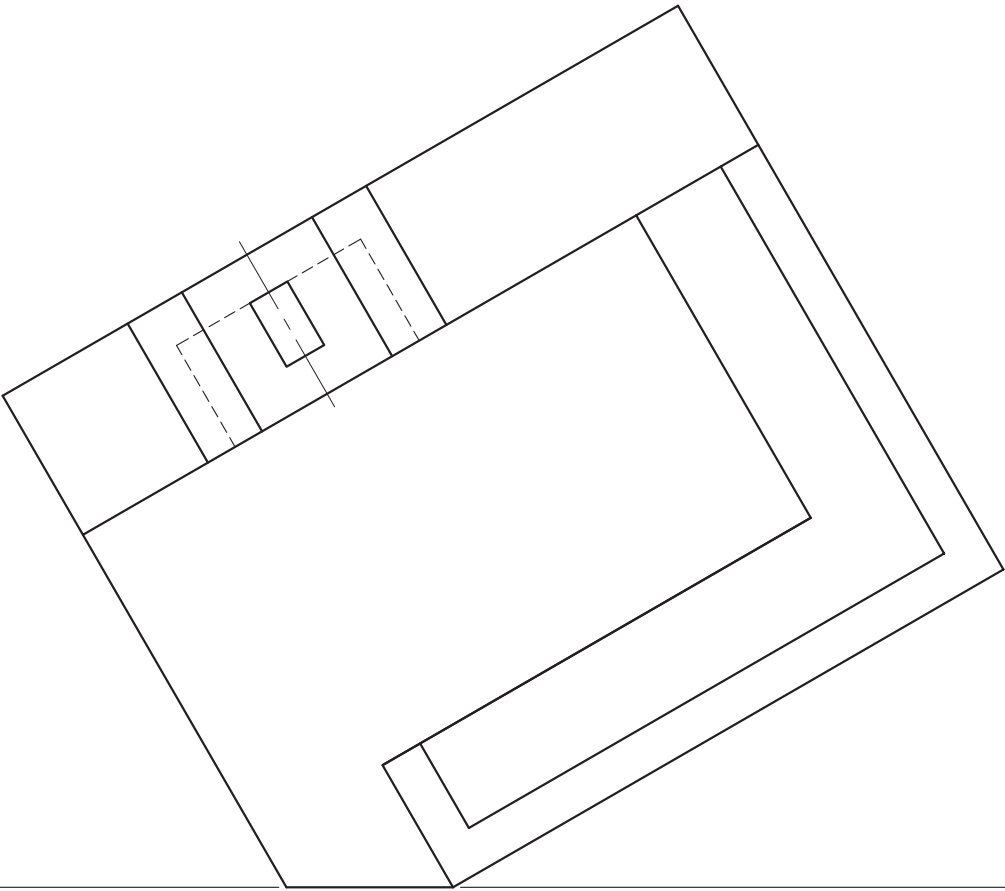
**Instructions:**  
Complete the perspective drawing.

- Align the drawing sheet with the ground line (GL).
- Determine and label the vanishing points.
- Show ALL necessary construction.
- Show the wall thickness at the openings.
- Show the floor tiles.
- NO hidden detail is required. [39]

ASSESSMENT CRITERIA				
1	CONSTRUCTION + VPs	7		
2	WALLS + TILES	15		
3	OPENINGS + SEATING	10		
4	SEMI-CIRCLE	7		
PENALTIES (-)				
TOTAL		39		

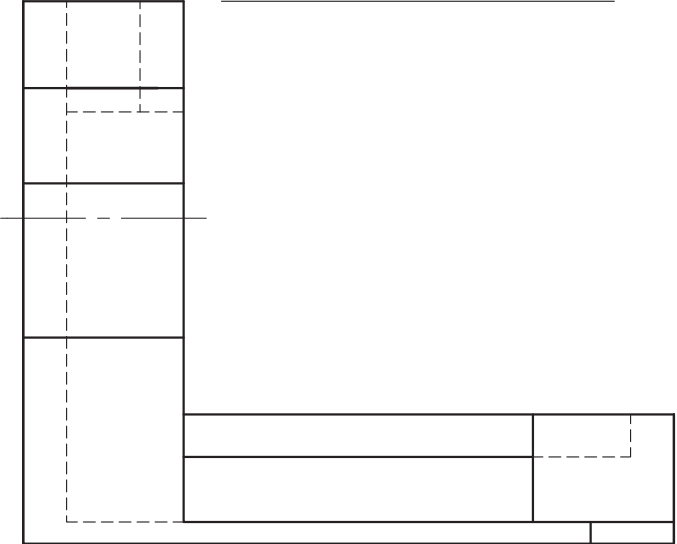


EXAMINATION NUMBER	
EXAMINATION NUMBER	4



PP

HL



GL

SP

QUESTION 3: PERSPECTIVE

**Given:**  
Three views of a braai area and information needed to draw a two-point perspective drawing.  
PP – Picture plane  
HL – Horizon line  
GL – Ground line  
SP – Station point

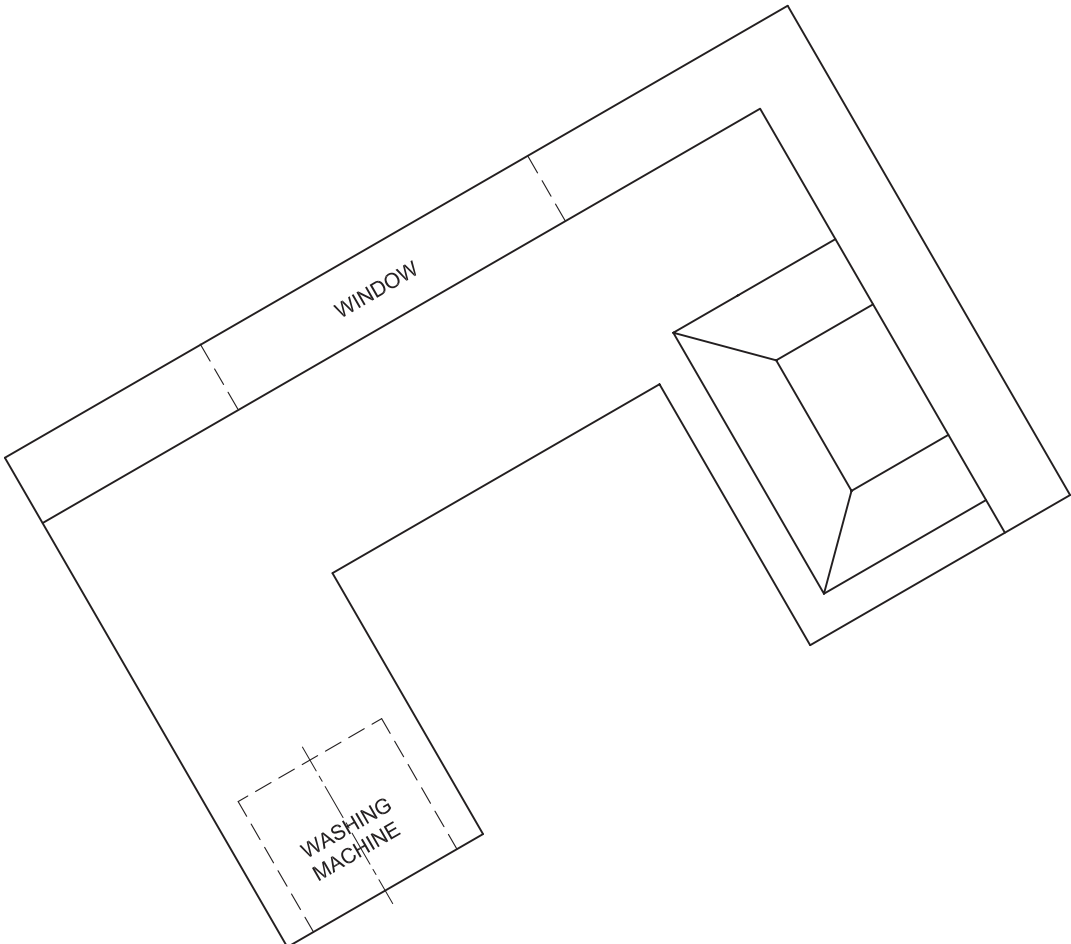
**Instructions:**  
Complete the perspective drawing.

- Align the drawing sheet with the ground line.
- Determine and label the vanishing points.
- Show ALL necessary construction.
- NO hidden detail is required.

[40]

ASSESSMENT CRITERIA					
1	CONSTRUCTION + VPs	7			
2	BRAAI	14½			
3	SEATING	13			
4	SEMI-CIRCLE	5½			
TOTAL		40			

EXAMINATION NUMBER	
EXAMINATION NUMBER	4



PP

HL

GL

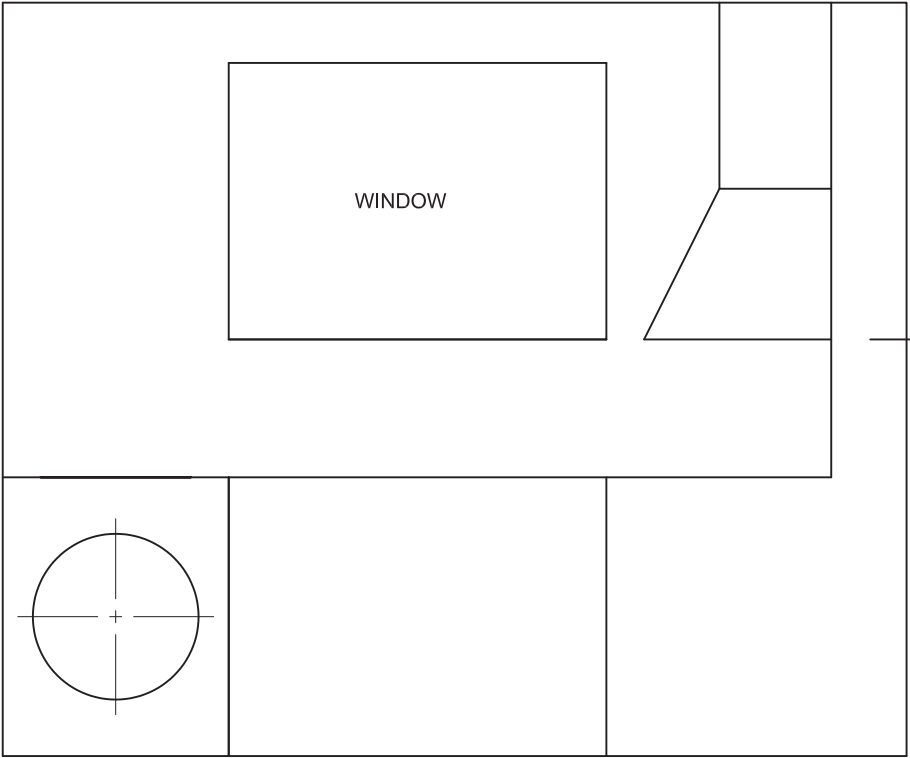
SP

QUESTION 3: PERSPECTIVE

**Given:**  
Two views showing the interior of a kitchen and the information needed to draw a two-point perspective drawing  
PP – Picture plane  
HL – Horizon line  
GL – Ground line  
SP – Station point

- Instructions:**  
Complete the perspective drawing.
- Align the drawing sheet with the ground line (GL).
  - Determine and label the vanishing points.
  - Show ALL necessary construction.
  - Show the wall thickness at the window.
  - Show the depth of the washing machine drum.
  - NO hidden detail is required.

[39]

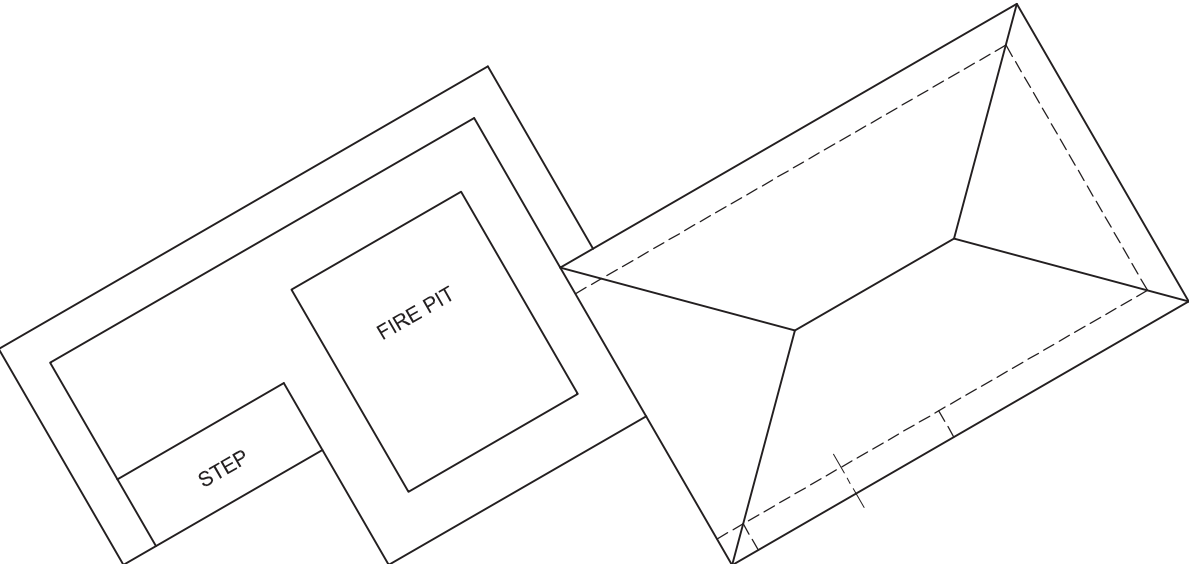


HL

ASSESSMENT CRITERIA					
1	CONSTRUCTION + VPs	6			
2	WALLS + CUPBOARDS	17½			
3	EXTRACTOR + CIRCLES	15½			
TOTAL		39			
EXAMINATION NUMBER					
EXAMINATION NUMBER					4



STAPLE



QUESTION 3: PERSPECTIVE

**Given:**  
Two views of a recreational area and the information needed to draw a two-point perspective drawing.  
PP – Picture plane  
HL – Horizon line  
GL – Ground line  
SP – Station point

**Instructions:**  
Complete the perspective drawing.

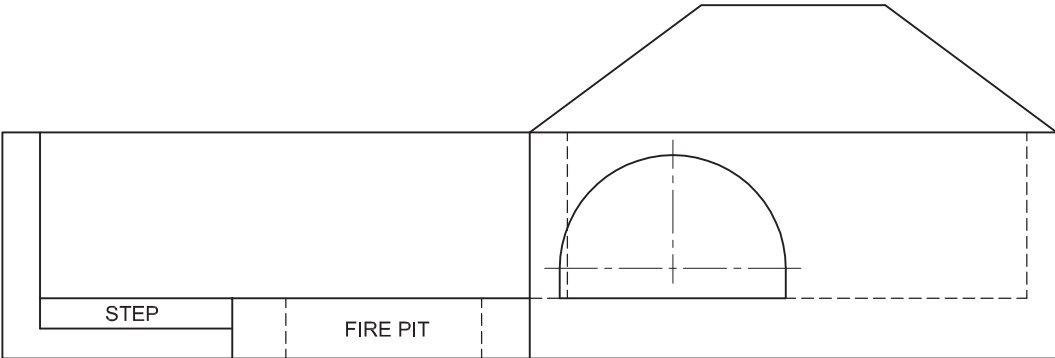
- Align the drawing sheet with the ground line (GL).
- Determine and label the vanishing points.
- Show ALL necessary construction.
- NO hidden detail is required.

[41]

PP

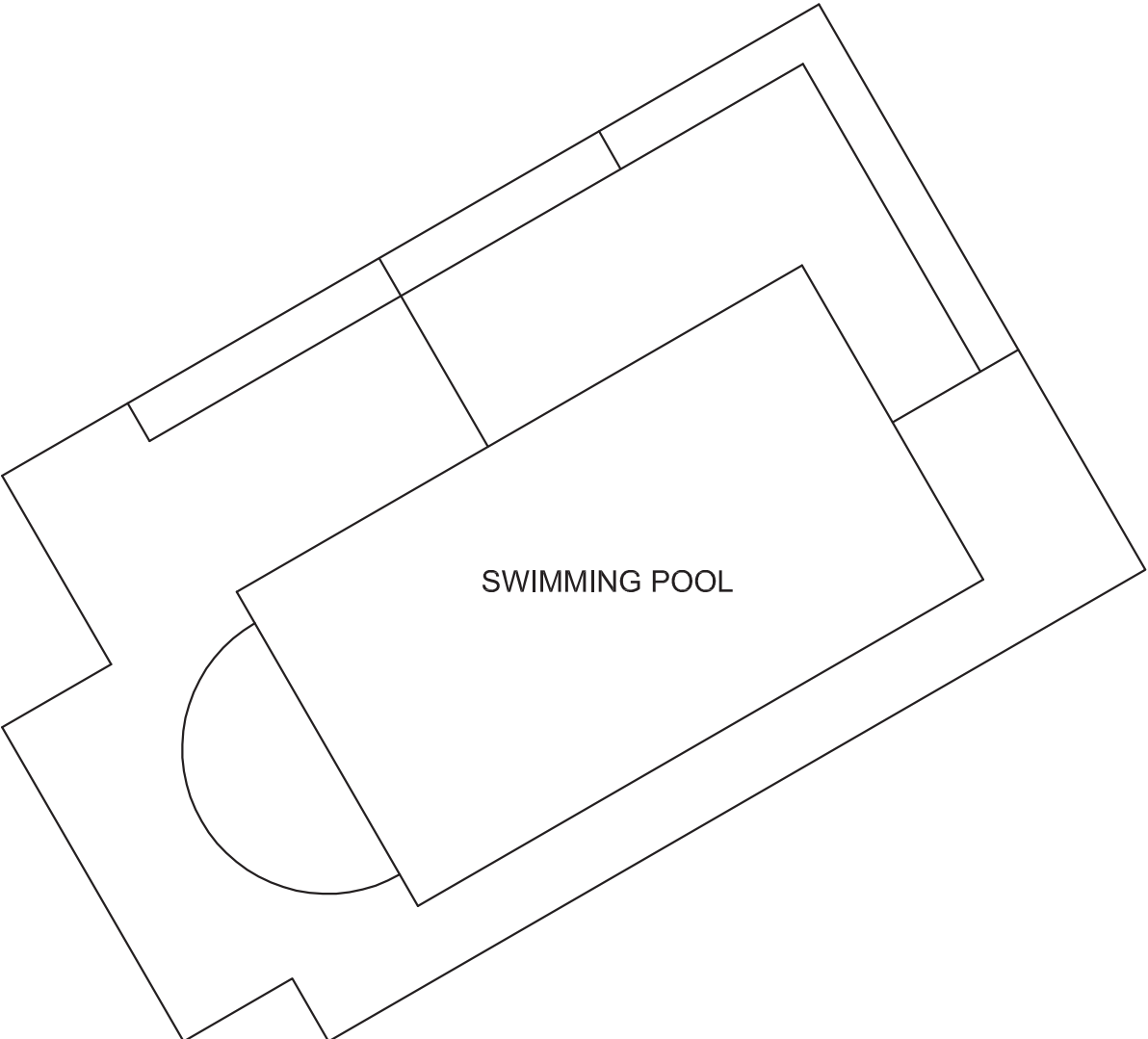
HL

GL



SP

ASSESSMENT CRITERIA					
1	CONSTRUCTION + VPs	7			
2	WALLS	13½			
3	BUILDING + ROOF	9			
4	ARCH + CONSTR' + PIT	11½			
TOTAL		41			
EXAMINATION NUMBER					
EXAMINATION NUMBER					4



QUESTION 3: PERSPECTIVE

**Given:**  
Two views of an entertainment area and swimming pool and the information needed to draw a two-point perspective drawing.  
PP – Picture plane  
HL – Horizon line  
GL – Ground line  
SP – Station point

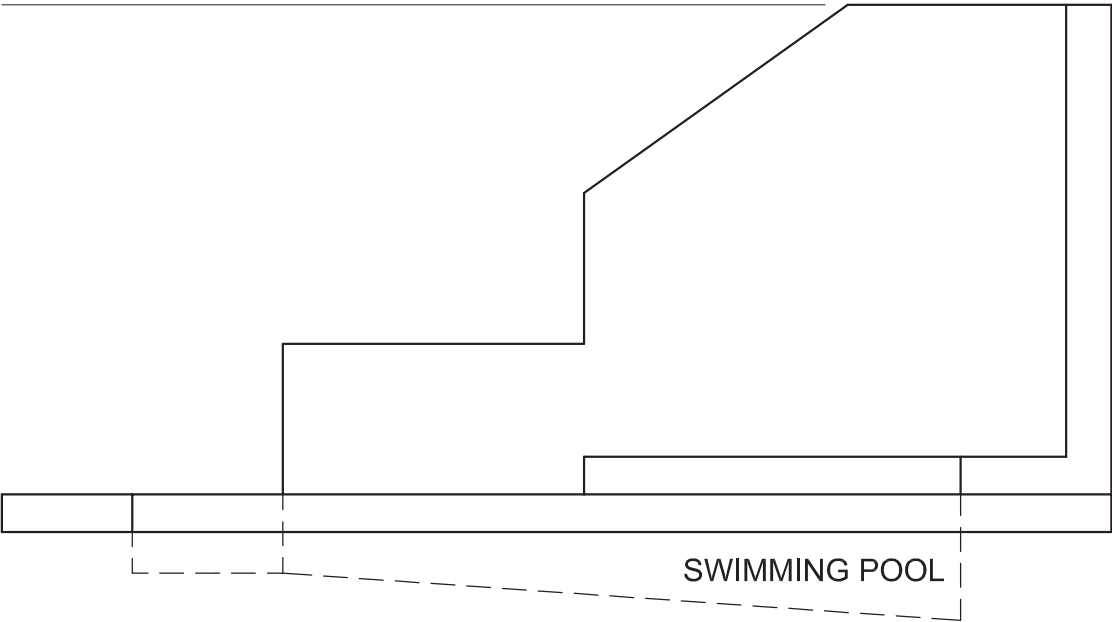
**Instructions:**  
Complete the perspective drawing.

- Align the drawing sheet with the ground line (GL).
- Determine and label the vanishing points.
- Show ALL necessary construction.
- NO hidden detail is required.

[39]

PP

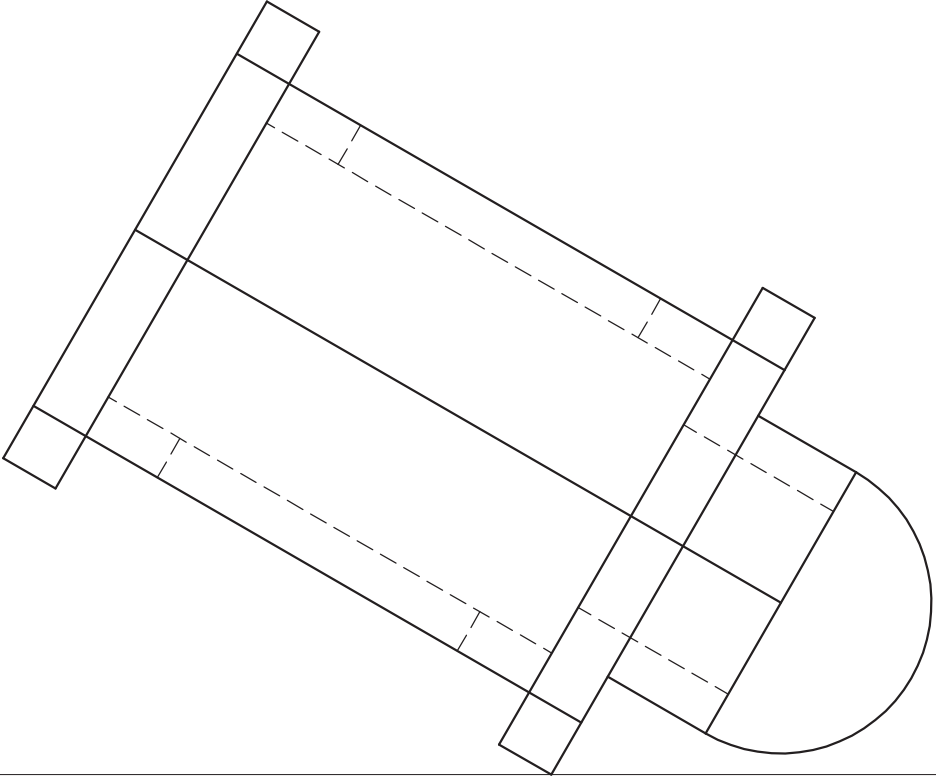
HL



GL

+  
SP

ASSESSMENT CRITERIA					
1	CONSTRUCTION + VPs	6			
2	SURROUND	9½			
3	WALL + STEP	12			
4	SWIMMING POOL	7			
5	SEMI-CIRCLE	4½			
TOTAL		39			
EXAMINATION NUMBER					
EXAMINATION NUMBER					4



QUESTION 3: PERSPECTIVE

**Given:**  
Three views of a wedding chapel and the information needed to draw a two-point perspective drawing  
PP – Picture plane  
HL – Horizon line  
GL – Ground line  
SP – Station point

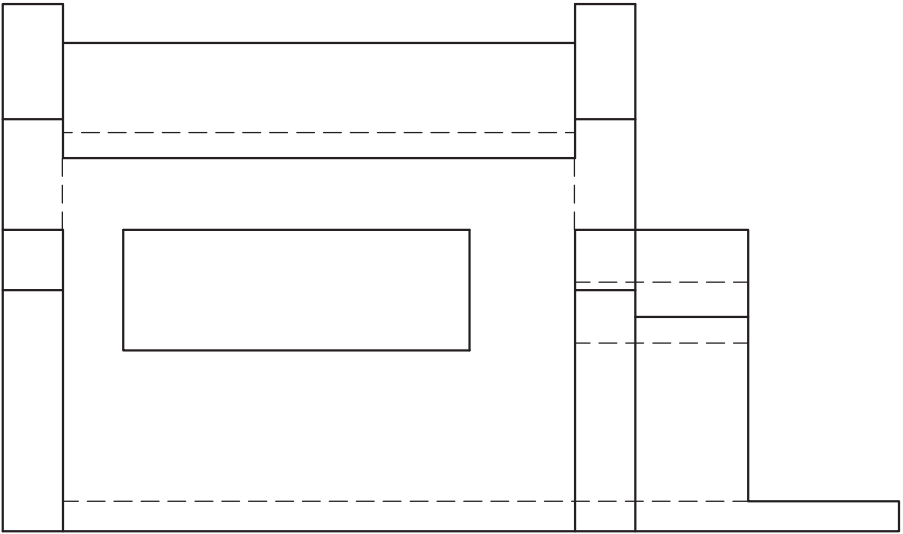
**Instructions:**  
Complete the perspective drawing.

- Align the drawing sheet with the ground line (GL).
- Determine and label the vanishing points.
- Show ALL necessary construction.
- Show the wall thickness at the window.
- NO hidden or interior detail is required.

[41]

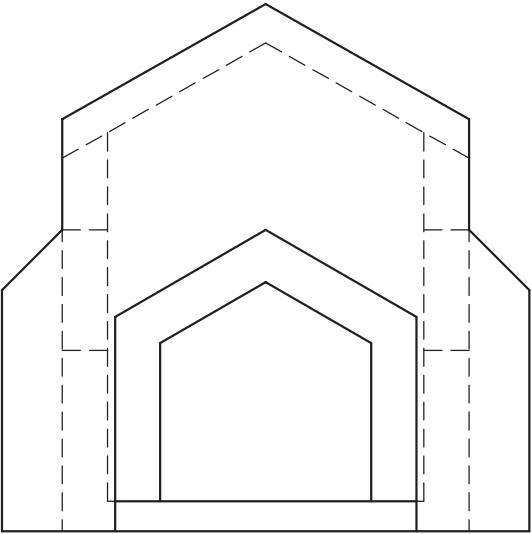
PP

HL



GL

SP



ASSESSMENT CRITERIA

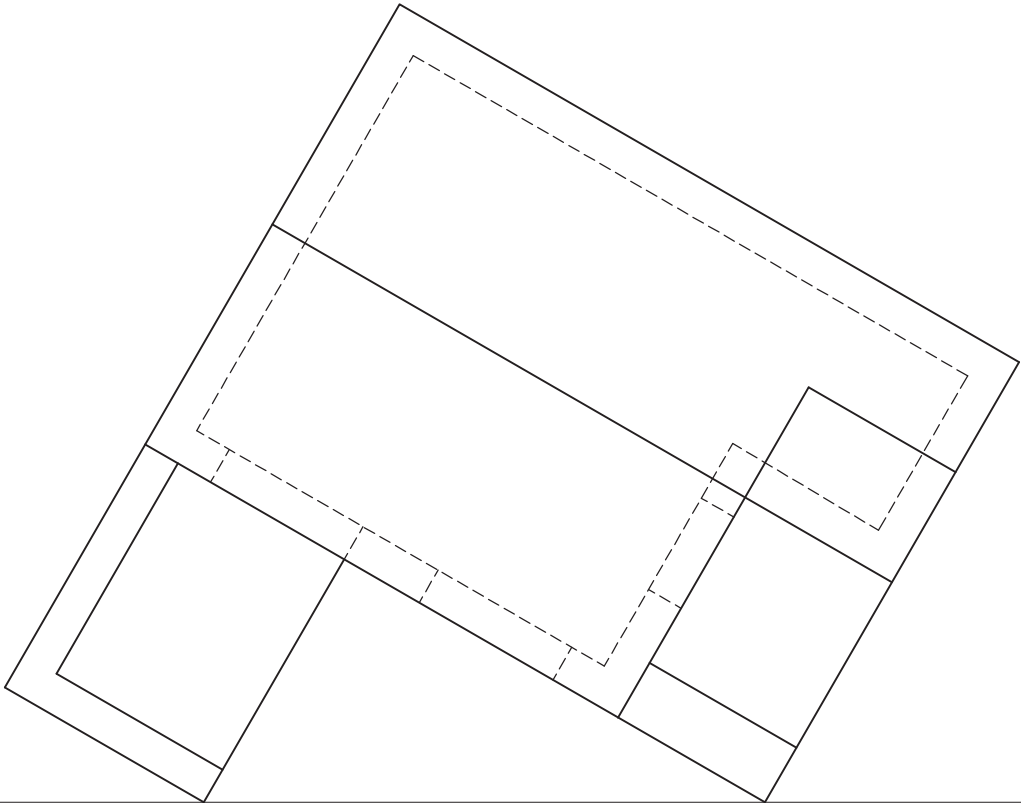
1	CONSTRUCTION + VPs	6			
2	BUILDING + WINDOW	15			
3	ROOF	7½			
4	ENTRANCE	8			
5	SEMICIRCLE	4½			
TOTAL		41			

EXAMINATION NUMBER

EXAMINATION NUMBER

4





VRAAG 3: PERSPEKTIEF

**Gegee:**  
Twee aansigte van 'n kothuis en die inligting benodig om 'n tweekpuntperspektieftekening te teken.  
PV – Prentvlak  
HL – Horisonlyn  
GL – Grondlyn  
SP – Staanpunt

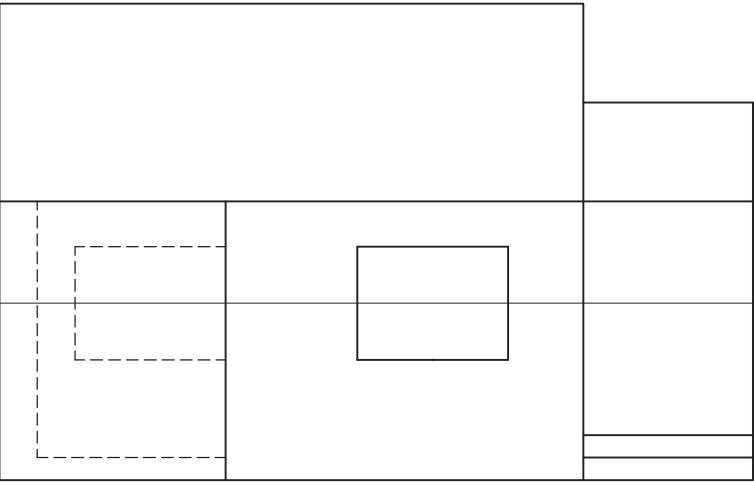
- Instruksies:**  
Voltooi die perspektieftekening.
- Rig die tekenvel volgens die grondlyn (GL).
  - Toon ALLE nodige konstruksies.
  - Toon die muurdikte by die deur en die vensters.
  - GEEN verborge besonderhede word verlang nie.
- [40]

PV

PV

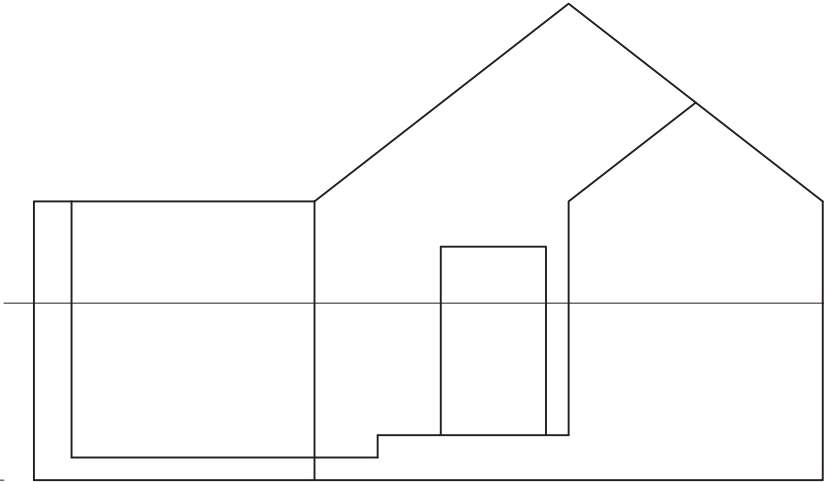
HL

GL



HL

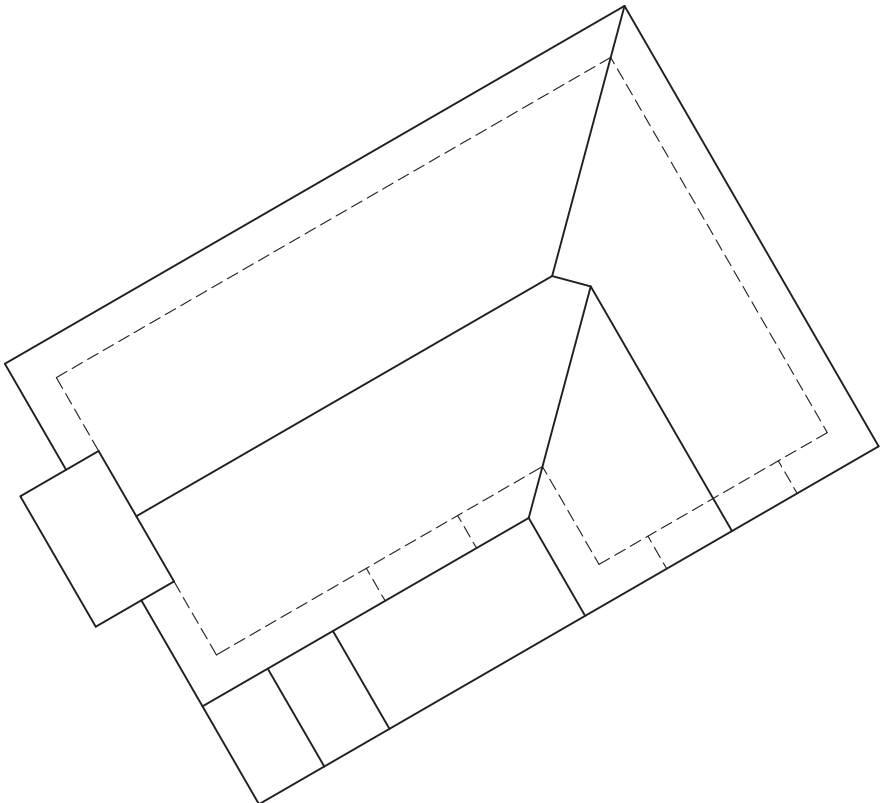
GL



SP

ASSESSERINGSKRITERIA				
KONSTRUKSIES + VP'e	7			
TRAPPE	7			
MURE + DEUR + VENSTERS	17			
DAK	9			
TOTAAL	40			
EKSAMENNOMMER				
EKSAMENNOMMER				4





PP

HL

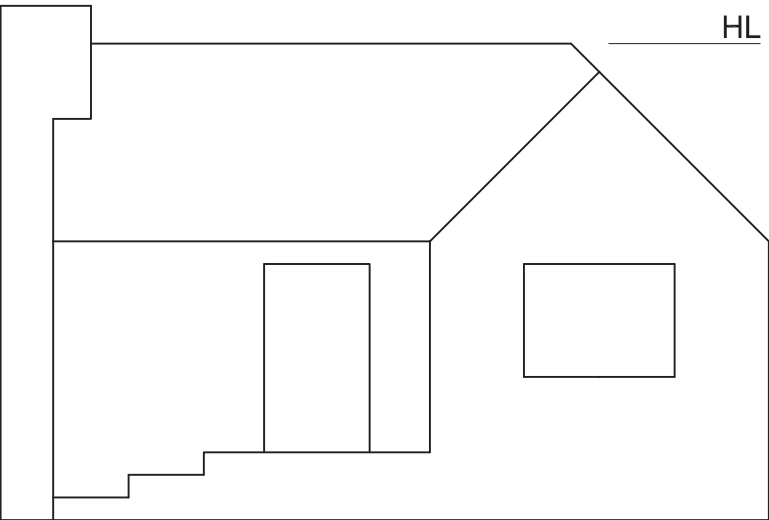
GL

SP

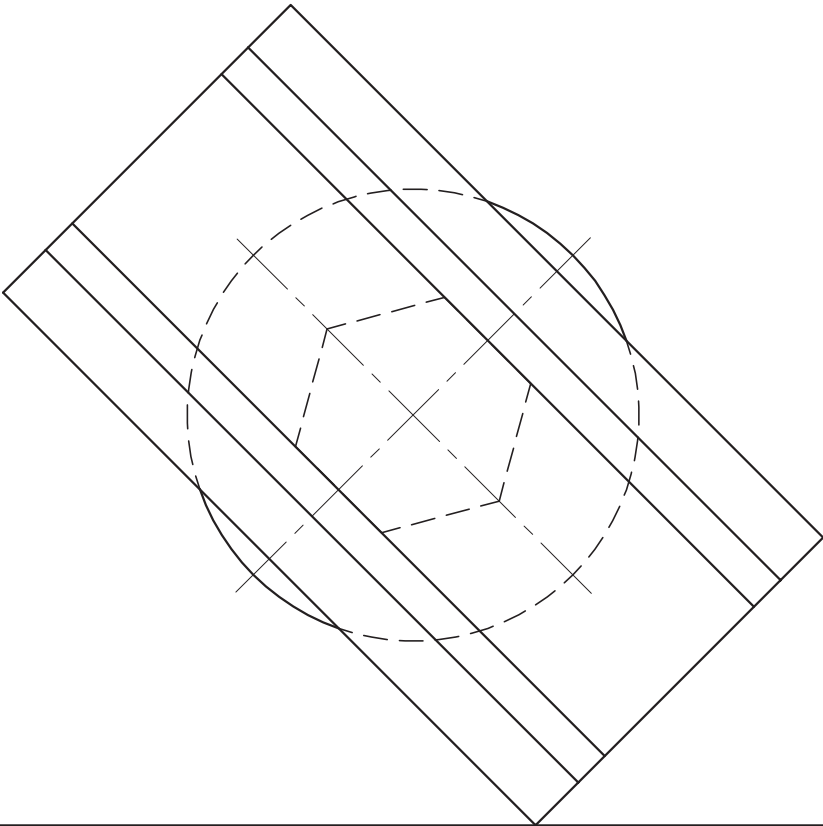
QUESTION 3: PERSPECTIVE

**Given:**  
Two views of a cottage and the information needed to draw a two-point perspective drawing.  
PP – Picture plane  
HL – Horizon line  
GL – Ground line  
SP – Station point

- Instructions:**  
Complete the perspective drawing.
- Align the drawing sheet with the ground line (GL).
  - Show ALL necessary construction.
  - Show the wall thickness at the door and the window.
  - NO hidden detail is required.
- [41]



ASSESSMENT CRITERIA				
CONSTRUCTION + VPs	7			
BUILDING	18			
ROOF + CHIMNEY	16			
TOTAL	41			
EXAMINATION NUMBER				
EXAMINATION NUMBER				4



QUESTION 3: PERSPECTIVE

**Given:**  
Three views of a single-pillar bridge and the information needed to draw a two-point perspective drawing.  
PP - Picture Plane  
HL - Horizon Line  
GL - Ground Line  
SP - Station Point

**Instructions:**  
Complete the perspective drawing.

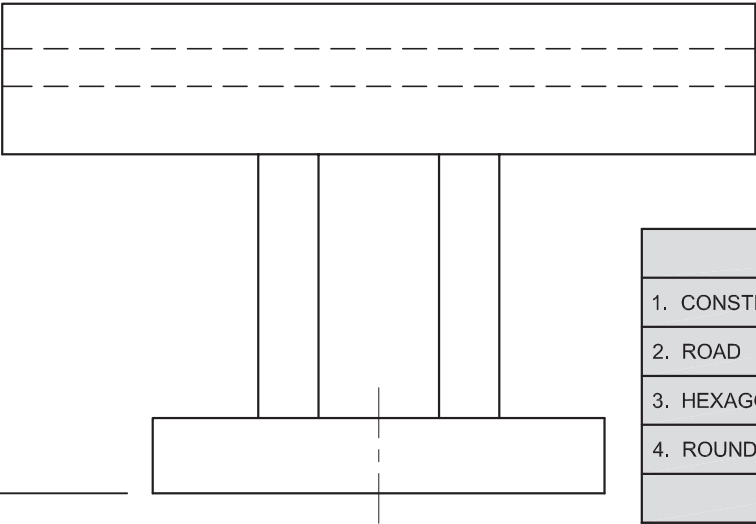
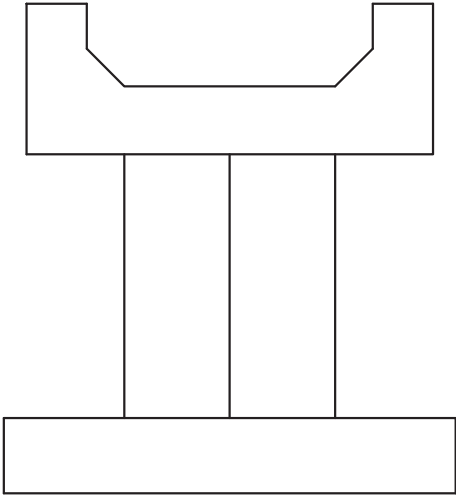
- Align the drawing sheet with the horizon line (HL).
- Locate and label the vanishing points.
- Show ALL necessary construction.
- NO hidden detail is required.

[36]

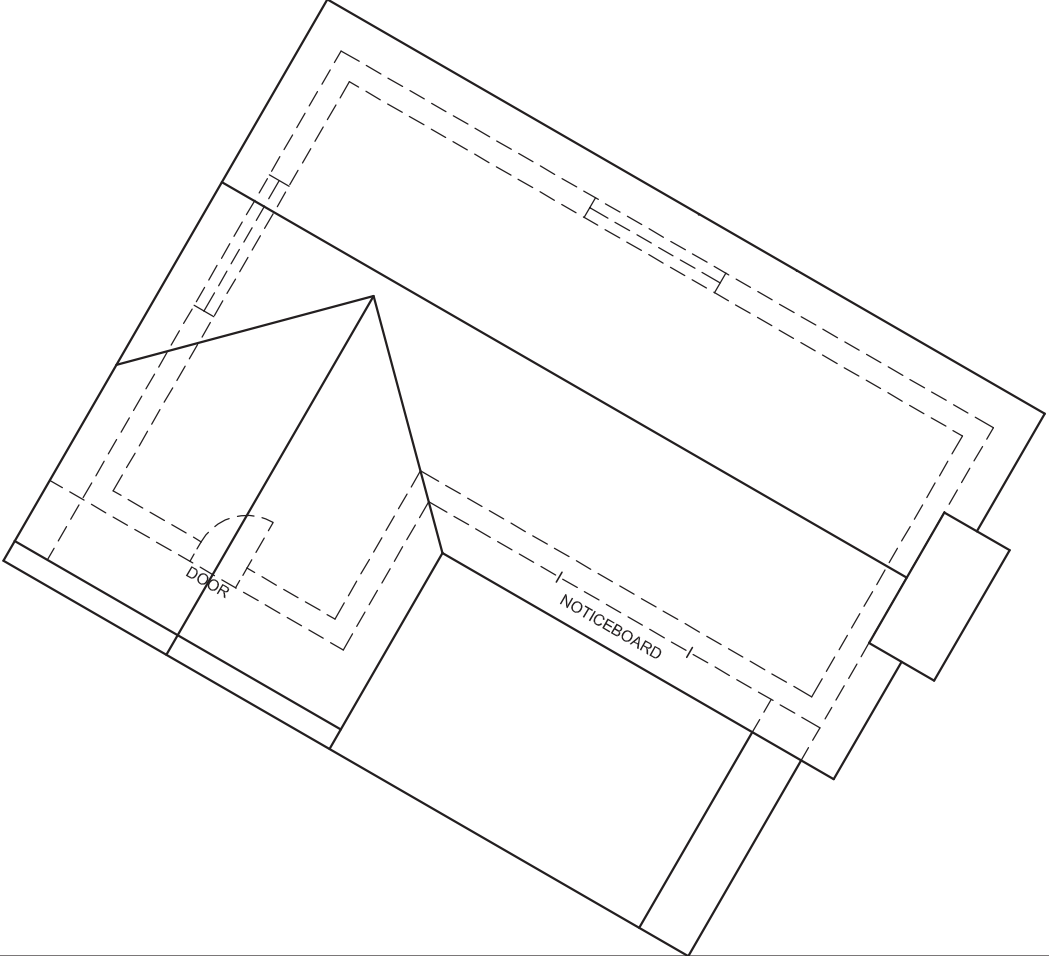
PP

HL

GL



ASSESSMENT CRITERIA				
1. CONSTRUCTION + VPs	7			
2. ROAD	10			
3. HEXAGONAL PILLAR	6			
4. ROUND BASE	13			
TOTAL	36			
EXAMINATION NUMBER				
EXAMINATION NUMBER				4



STAPLE

**QUESTION 3: PERSPECTIVE**

**Given:**  
Three views of a clubhouse and the information needed to draw a two-point perspective drawing  
PP - Picture plane  
HL - Horizon line  
GL - Ground line  
SP - Station point

**Instructions:**  
Complete the perspective drawing.

- Align the drawing sheet with the horizon line (HL).
- Locate and label the vanishing points.
- Show ALL necessary construction.
- NO hidden detail is required.

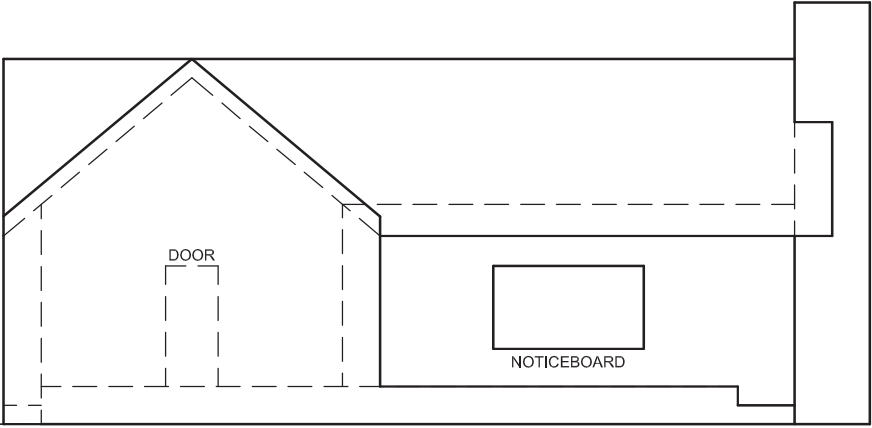
[36]

PP

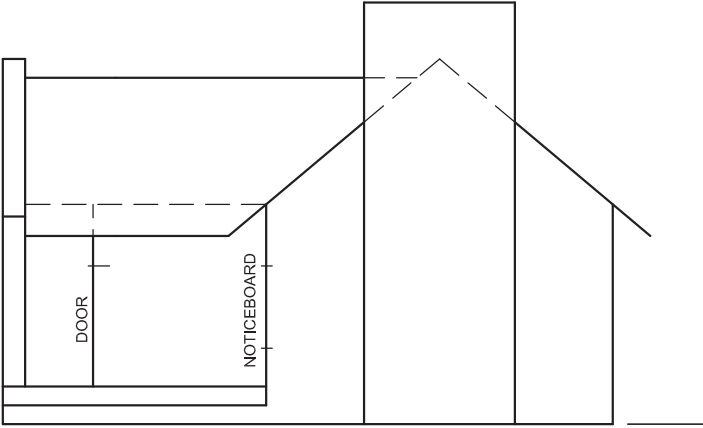
---

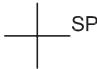
HL

---



GL



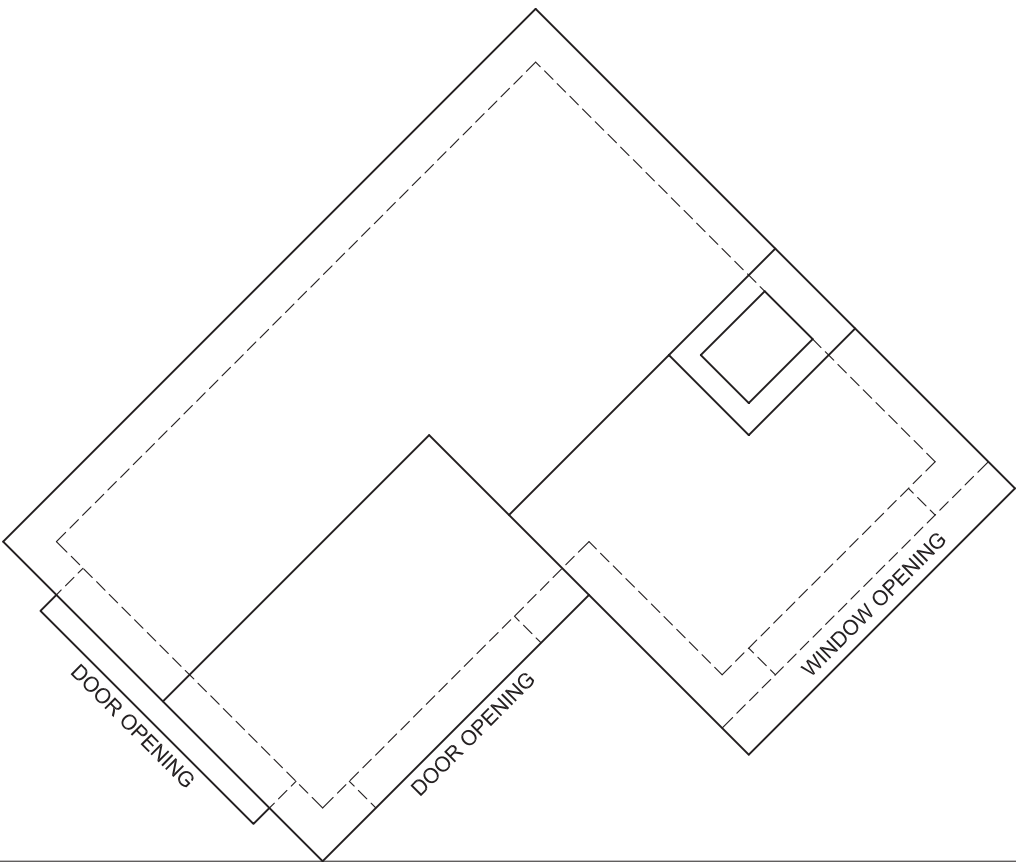


ASSESSMENT CRITERIA				
1. CONSTRUCTION + VPs	7			
2. ROOF	8½			
3. WALLS + WINDOW	15½			
4. CHIMNEY	5			
<b>TOTAL</b>	<b>36</b>			
EXAMINATION NUMBER				
EXAMINATION NUMBER				4

Copyright reserved

Paper Compiled by SA Students Copyright © Original Authors 2024 ©

Please turn over



QUESTION 3: PERSPECTIVE

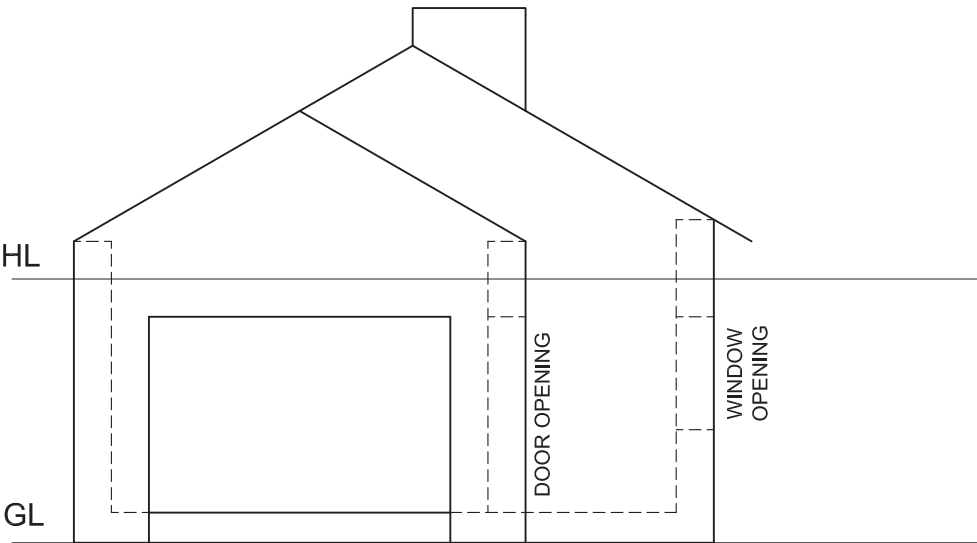
**Given:**  
Two views of a simple building and the information needed to draw a two-point perspective drawing.  
PP – Picture Plane  
HL – Horizon Line  
GL – Ground Line  
SP – Station Point

**Instructions:**  
Complete the perspective drawing.

- Align the drawing sheet with the horizon line (HL).
- Locate and label the vanishing points.
- Show ALL visible detail inside the building.
- NO hidden detail is required.
- Show ALL necessary construction.

[39]

PP



HL

SP

ASSESSMENT CRITERIA				
CONSTRUCTION + VPs	5			
PART (A)	16½			
PART (B)	6½			
ROOF + CHIMNEY	11			
TOTAL	39			
EXAMINATION NUMBER				
EXAMINATION NUMBER				4



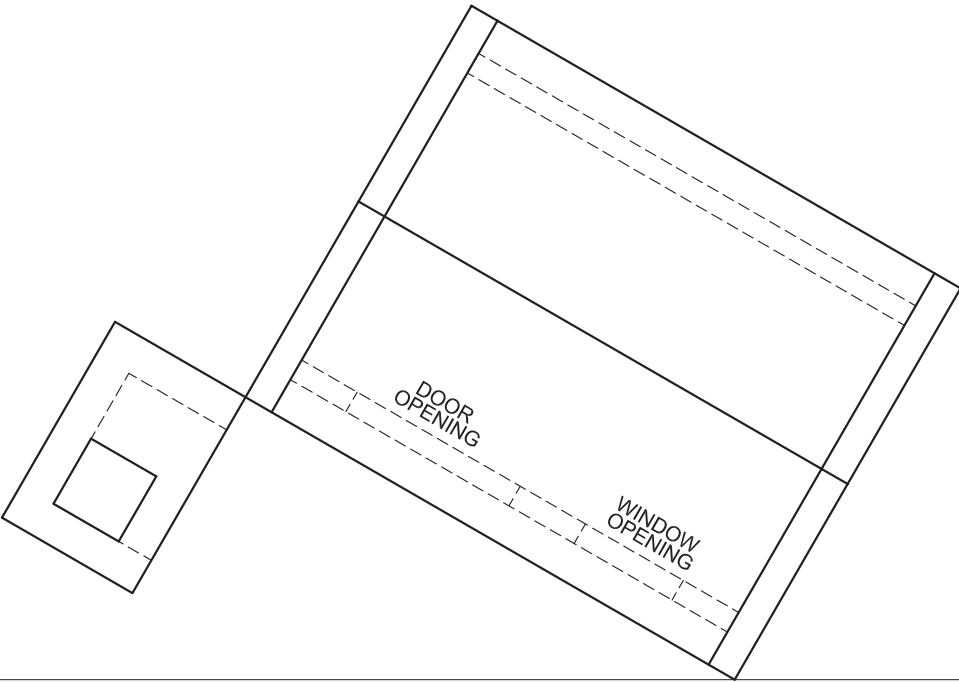
QUESTION 3: PERSPECTIVE

**Given:**  
Two views of a clubhouse with a built-in braai and the information needed to draw a two-point perspective drawing.  
PP – Picture Plane  
HL – Horizon Line  
GL – Ground Line  
SP – Station Point

**Instructions:**  
Complete the perspective drawing.

- Align the drawing sheet with the horizon line (HL).
- Locate and label the vanishing points.
- Show ALL visible detail inside the dwelling.
- NO hidden detail is required.
- Show ALL necessary constructions.

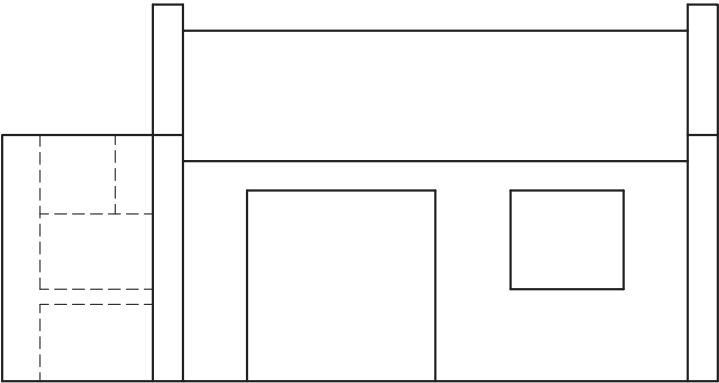
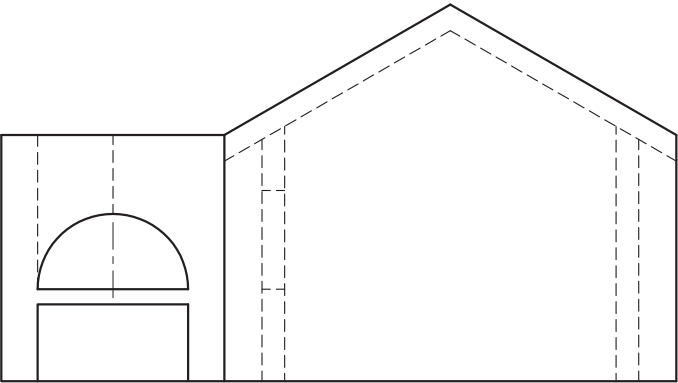
[36]



PP \_\_\_\_\_

HL \_\_\_\_\_

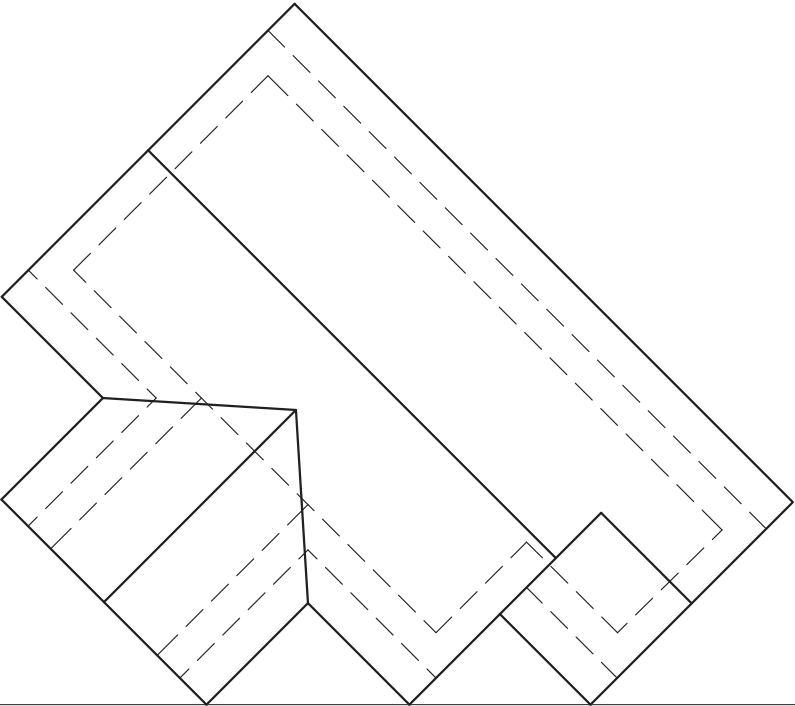
GL \_\_\_\_\_



+

SP

ASSESSMENT CRITERIA				
CONSTRUCTION + VPs	6			
DWELLING (A)	17½			
BRAAI (B)	12½			
<b>TOTAL</b>	<b>36</b>			
EXAMINATION NUMBER				
EXAMINATION NUMBER				4



QUESTION 3: PERSPECTIVE

**Given:**  
Two views of a structure and the information needed to draw a two-point perspective drawing.  
PP - Picture Plane  
HL - Horizon Line  
GL - Ground Line  
SP - Station Point

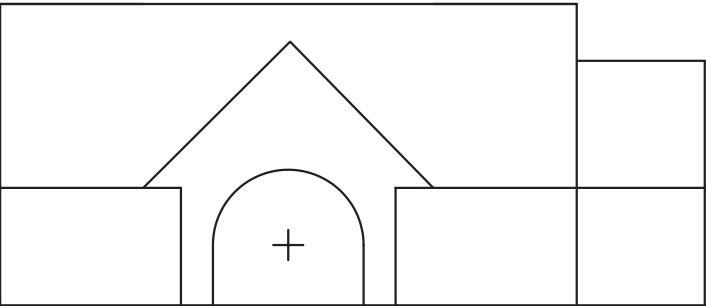
**Instructions:**  
3.1 Complete the perspective drawing.

- Locate and label the vanishing points.
- NO hidden detail is required.
- Show ALL necessary construction.
- Align the drawing sheet with the horizon line (HL). **[39]**

PP

HL

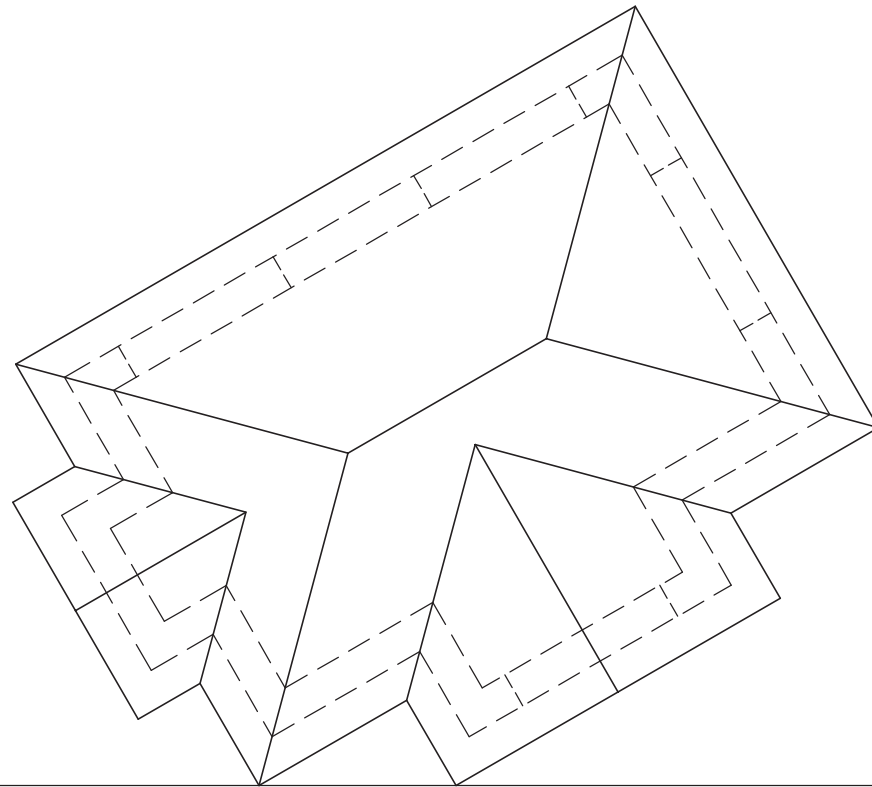
GL



⊗ SP

ASSESSMENT CRITERIA	
CONSTRUCTION	4
FIND AND LABEL VP's	4
CIRCLE + CONSTRUCTION	8
ROOF	14
WALLS, DOOR	9
<b>TOTAL</b>	<b>39</b>

EXAMINATION NUMBER	
EXAMINATION NUMBER	4



PP

HL

GL

SP

### QUESTION 3: PERSPECTIVE

**Given:**

Two views of a structure and the information needed to draw a two-point perspective drawing.

PP - Picture Plane

HL - Horizon Line

GL - Ground Line

SP - Station Point

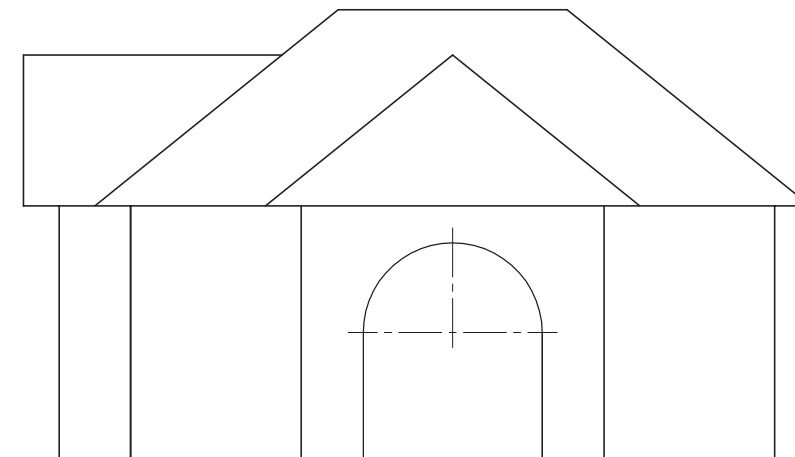
**Instructions:**

- Locate and label the vanishing points.
- Complete the perspective drawing.
- Show ALL necessary construction.
- Show depth and internal features.

**NOTE:**

- Align drawing sheet with the horizon line (HL).
- NO hidden detail is required.

**[43]**



### ASSESSMENT CRITERIA

CONSTRUCTION	6
LABEL THE VPs	2
CIRCLE CONSTRUCTION	3
ROOF	10
WALLS, DOOR	22
<b>TOTAL</b>	<b>43</b>

EXAMINATION NUMBER	
EXAMINATION NUMBER	4